

**LED**  
**LIGHT**  
**FIXTURES**



# ABOUT US

JSC Proton is a leading manufacturer of optoelectronics in Russia. The company has successfully been working in the market since 1972 and possesses modern technologies of optoelectronic devices production, performs complete production cycle from chips to finished products. The company specializes in design and production of:

- **high luminous efficient LED fixtures;**
- **explosive-proof LED fixtures for 1, 21, 2, 22 zones;**
- **LED traffic lights, boards, beacons;**
- **optocouplers and solid state relays;**
- **chips of photovoltaic arrays, DMOS-transistors and pin-diodes.**

If requested by the customer technical experts of JSC Proton can perform the lighting design of illumination projects of various objects using «DIALux» program on the base of JSC Proton laboratory.

The company is certified by quality management international system ISO 9001:2015 and has all the necessary certificates and licenses.

The products are successfully sold in Russia and are exported to the countries of near and far abroad.

JSC Proton is an official supplier of such huge enterprises of the Russian Fuel and Energy Complex as PJSC Gazprom, PJSC Rosneft Oil Company, PJSC Inter RAO UES and others.





PRODUCT CATALOGUE  
2019

## OUTDOOR ILLUMINATION

SERIES <b>PROSPEKT</b> .....	6
SERIES <b>TRASSA</b> .....	10
SERIES <b>SPEKTR</b> .....	14
SERIES <b>LYUMEN-4 IP 65</b> .....	18
SERIES <b>LUCH</b> .....	22
SERIES <b>PARK</b> .....	26

## INDOOR ILLUMINATION

SERIES <b>LYUMEN</b> .....	32
SERIES <b>TRASSA-A</b> .....	36
SERIES <b>SPEKTR-A</b> .....	40
SERIES <b>LINIYA</b> .....	44
SERIES <b>ARMSTRONG</b> .....	50
SERIES <b>BONUS</b> .....	56
SERIES <b>LYUKS</b> .....	62
SERIES <b>PROSTOR-3M</b> .....	66

## EXPLOSION-PROOF ILLUMINATION

SERIES <b>SVS-001</b> .....	72
SERIES <b>SPV-001</b> .....	76
SERIES <b>SPV-003</b> .....	80
SERIES <b>SPV-005</b> .....	84
SERIES <b>TRASSA-EX</b> .....	88
SERIES <b>SPEKTR-EX</b> .....	92
SERIES <b>SPEKTR-A-EX</b> .....	96
SERIES <b>SPEKTR-AVS</b> .....	100
SERIES <b>LYUMEN-EX</b> .....	104

## EMERGENCY ILLUMINATION

SERIES <b>SPEKTR-BA</b> .....	110
SERIES <b>LINIYA-BA</b> .....	114
SERIES <b>ARMSTRONG-BA</b> .....	118







# OUTDOOR ILLUMINATION





Prospekt



# OUTDOOR ILLUMINATION

## DESCRIPTION

**Outdoor illumination** of highways, streets, roads

**LED technology** with a high luminous efficiency with rated lumen-maintenance life  
**L70F10 (50000 hours) and L50F50 (100000 hours)**

Light distribution curve according to **the customer's choice**

Aesthetically designed repairable housing: **a separate block for changing the driver**

Warranty period – **5 years**

## TECHNICAL DATA

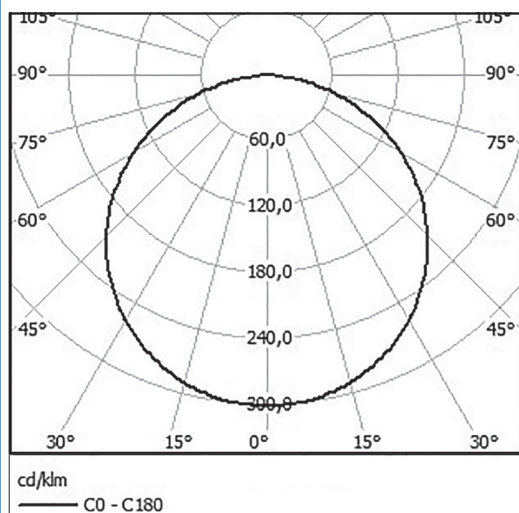
Type of protection	Certificate	EAC
	Protection degree	IP65
	Ambient temperature	-63°C÷+60°C
Electrical data	Supply voltage, VAC	140÷265
	Supply voltage, VDC	200÷370
	Frequency, Hz	50±10%
	Color temperature, K	4000÷6000
	Durability, hours	50000
	Warranty, years	5
Construction	Housing	Anodized aluminum profile with plastic end covers
	Diffuser	Heat-strengthened glass
	Gasket	Silicone
	Overall dimensions, mm	See Model code table
	Weight, kg	See Model code table
	Mounting	Stanchion

Model catalogue number	Luminous flux, lm	Power consumption, W	Overall dimensions (AxBxC), mm	Weight, kg
<b>Prospekt-1</b> (SKS-A/B-220-011-N-MCC1)	26500	240	910x285x170	12,0
<b>Prospekt-2</b> (SKS-B-220-012-N-MCC1)	23000	185	780x285x170	10,0
<b>Prospekt-2R*</b> (SKS-B-220-015-N-MCC1)	22500	180	780x285x170	11,2
<b>Prospekt-2D**</b> (SKS-B-220-016-N-MCC1)	22500	180	780x285x170	11,2
<b>Prospekt-3</b> (SKS-A/B-220-014-N-MCC1)	31500	300	910x285x170	14,3

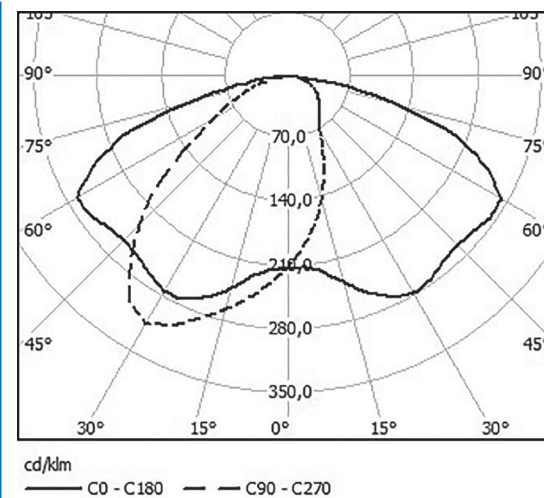
\*R - an ability to adjust light flux value from 0% to 100% by wireless radio channel

\*\*D - an ability to adjust light flux value from 10% to 100% by external control voltage from 0 V to 10 V

## LIGHT DISTRIBUTION CURVE



**A - cosine**

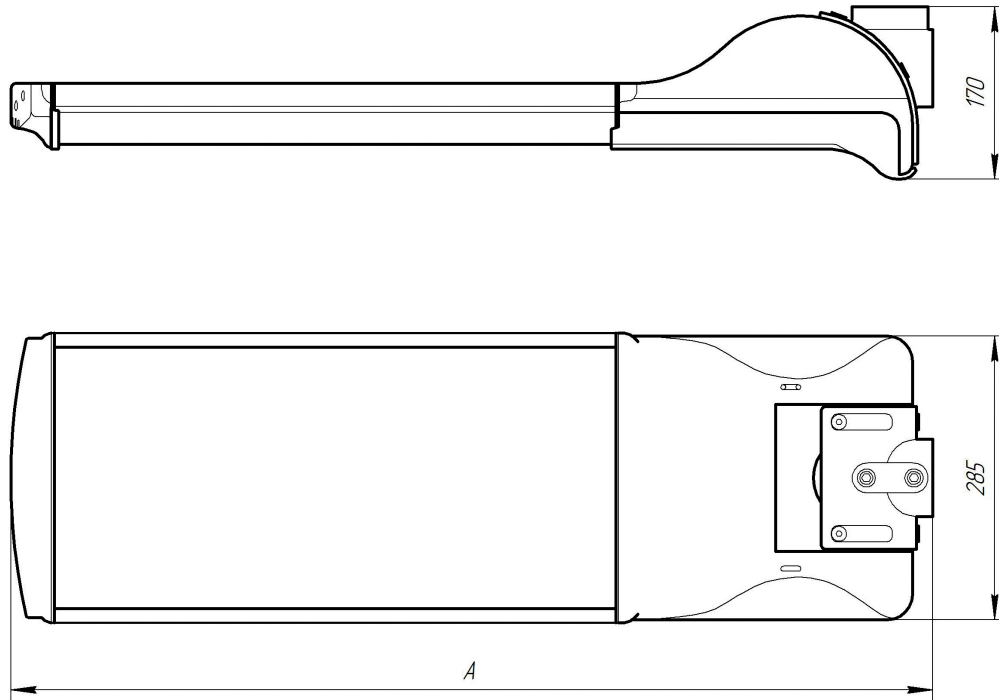


**B - wide**

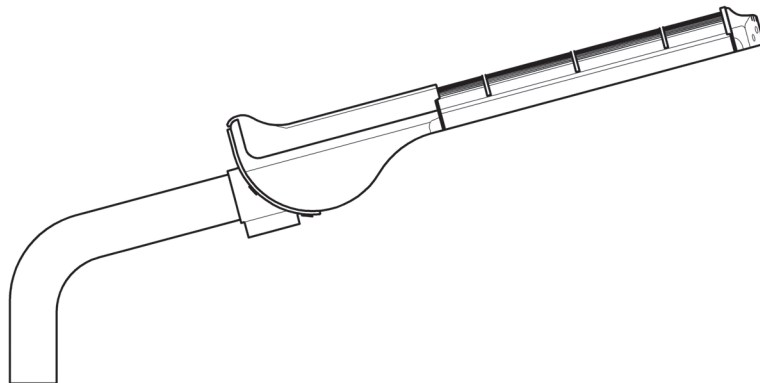


# OUTDOOR ILLUMINATION

## DIMENSION DRAWINGS

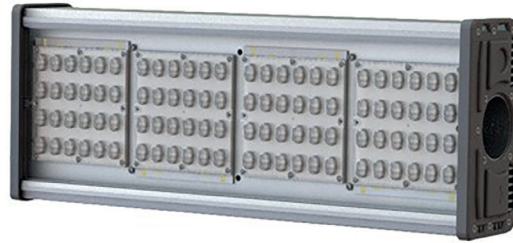


## MOUNTING

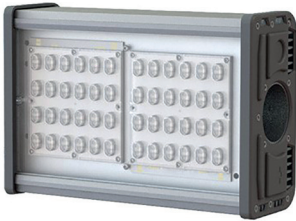




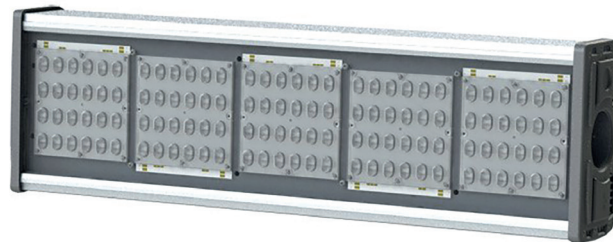
**Trassa-1**



**Trassa-4**



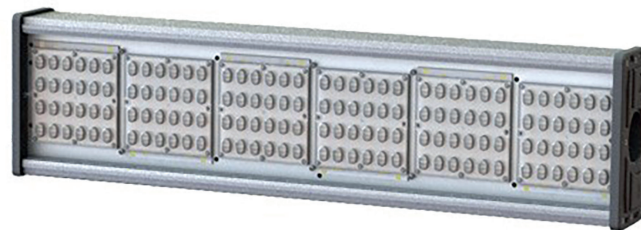
**Trassa-2**



**Trassa-5**



**Trassa-3**



**Trassa-6**

# OUTDOOR ILLUMINATION

## DESCRIPTION

**Outdoor illumination** of highways, streets, roads

**LED technology** with a high luminous efficiency with rated lumen-maintenance life  
**L70F10 (50000 hours) and L50F50 (100000 hours)**

Light distribution curve according to **the customer's choice**

**Reliable housing**

Warranty period - **5 years**

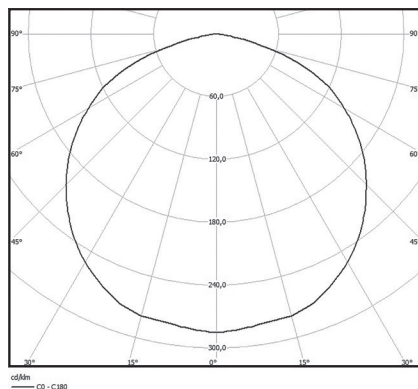
## TECHNICAL DATA

<b>Type of protection</b>	Certificate	EAC
	Protection degree	IP67
	Ambient temperature	-63°C÷+60°C
<b>Electrical data</b>	Supply voltage, VAC	140÷265
	Supply voltage, VDC	200÷370
	Frequency, Hz	50±10%
	Color temperature, K	W - 3000÷4000, N - 4000÷6000
	Durability, hours	100000
	Warranty, years	5
<b>Construction</b>	Housing	Anodized aluminum profile with plastic end covers
	Diffuser	Polycarbonate glass
	Gasket	Silicone
	Overall dimensions, mm	See <i>Model code</i> table
	Weight, kg	See <i>Model code</i> table
	Mounting	Stanchion

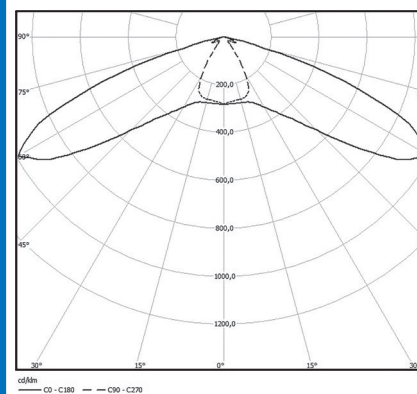
Model catalogue number	Luminous flux, lm	Power consumption, W	Overall dimensions (AxBxC), mm	Weight, kg
<b>Trassa-1</b> (SKS-A/B/C-220-001-N/W-MCC1)	3750	30	245x209x105	3,2
<b>Trassa-2</b> (SKS-A/B/C-220-002-N/W-MCC1)	7500	60	340x209x105	5,5
<b>Trassa-3</b> (SKS-A/B/C-220-003-N/W-MCC1)	11250	90	462x209x105	7,5
<b>Trassa-4</b> (SKS-A/B/C-220-004-N/W-MCC1)	15000	120	580x209x105	9,7
<b>Trassa-5</b> (SKS-A/B/C-220-005-N/W-MCC1)	18750	150	720x209x105	11,3
<b>Trassa-6</b> (SKS-A/B/C-220-006-N/W-MCC1)	22500	180	840x209x105	13,2
<b>Trassa-6D*</b> (SKS-B-220-017-N/W-MCC1)	22 500	180	840x209x105	13,2

\*D - an ability to adjust light flux value from 10 % to 100 % by external control voltage from 0 V to 10 V.

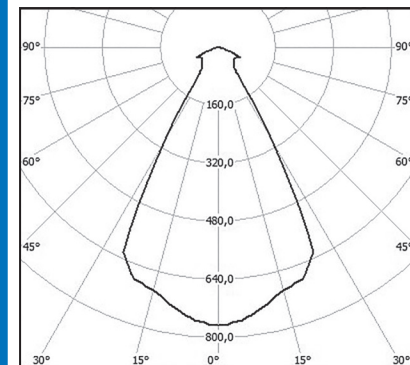
## LIGHT DISTRIBUTION CURVE



**A - cosine**



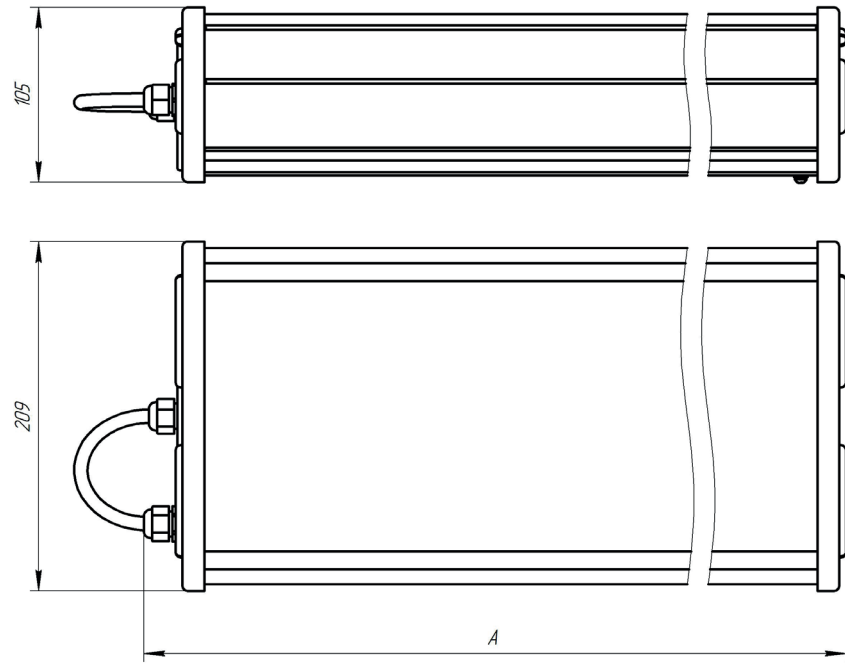
**B - wide**



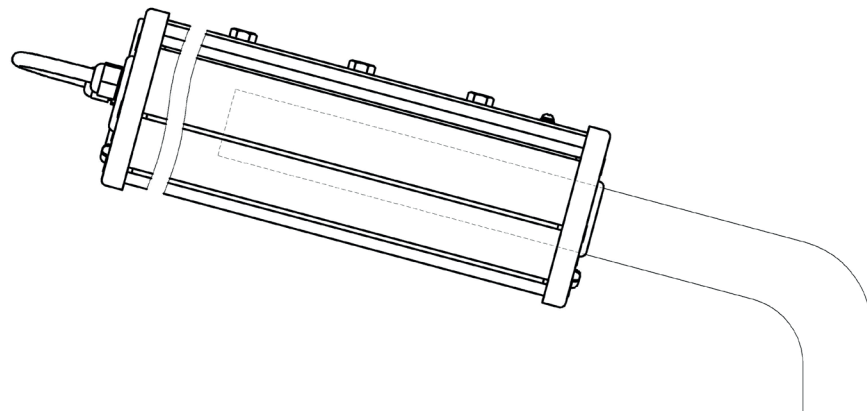
**C - deep**

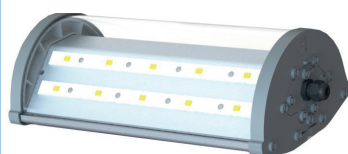
# OUTDOOR ILLUMINATION

## DIMENSION DRAWINGS



## MOUNTING





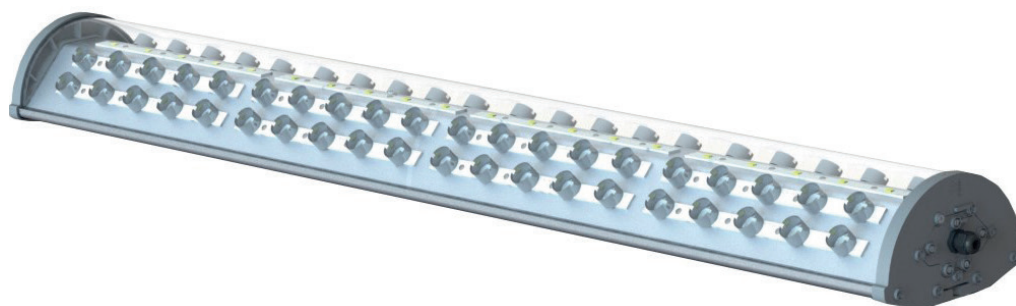
**Spektr-30**



**Spektr-50**



**Spektr-70**



**Spektr-100**

# OUTDOOR ILLUMINATION

## DESCRIPTION

**Outdoor illumination** of highways, streets, roads

**LED technology** with a high luminous efficiency with rated lumen-maintenance life  
**L70F10 (50000 hours) and L50F50 (100000 hours)**

Light distribution curve according to **the customer's choice**

**Aesthetically** designed housing

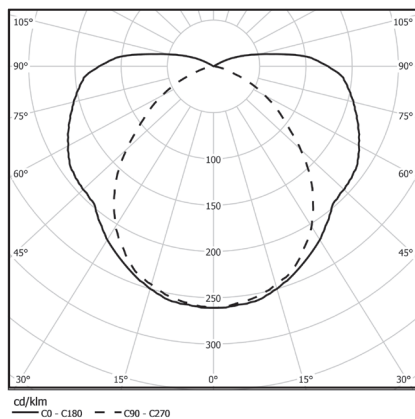
Warranty period – **5 years**

## TECHNICAL DATA

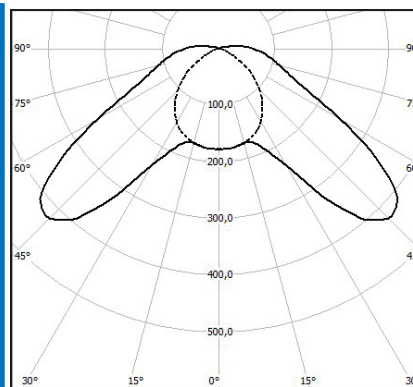
Type of protection	Certificate	EAC
	Protection degree	IP65
	Ambient temperature	- 40°C÷+ 60°C
Electrical data	Supply voltage, VAC	140÷265
	Supply voltage, VDC	200÷370
	Frequency, Hz	50±10%
	Color temperature, K	W - 3000÷4000, N - 4000÷6000
	Durability, hours	100000
	Warranty, years	5
Construction	Housing	Anodized aluminum profile with plastic end covers
	Diffuser	Polycarbonate glass
	Gasket	Silicone
	Overall dimensions, mm	See <i>Model code</i> table
	Weight, kg	See <i>Model code</i> table
	Mounting	Stanchion

Model catalogue number	Luminous flux, lm	Power consumption, W	Overall dimensions (AxBxC), mm	Weight, kg
<b>Spektr-30</b> (SSO-A-220-003-N/W-MCC1)	3250	26	310x180x107	3,0
<b>Spektr-50</b> (SSO-B-220-004-N/W-MCC1)	7440	62	635x180x107	5,5
<b>Spektr-70</b> (SSO-A-220-010-N/W-MCC1)	11250	90	715x180x107	6,0
<b>Spektr-100</b> (SSO-B-220-005-N/W-MCC1)	15000	125	1228x180x107	10,0

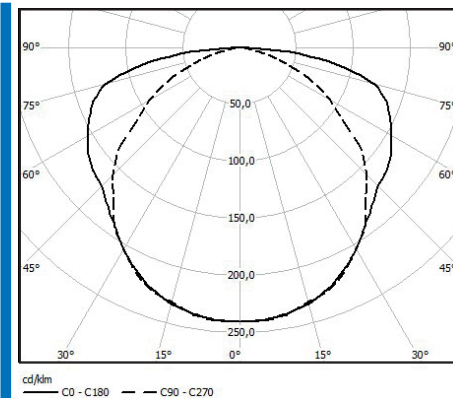
## LIGHT DISTRIBUTION CURVE



**A - cosine**  
Spektr-30



**B - wide**  
Spektr-50,  
Spektr-100

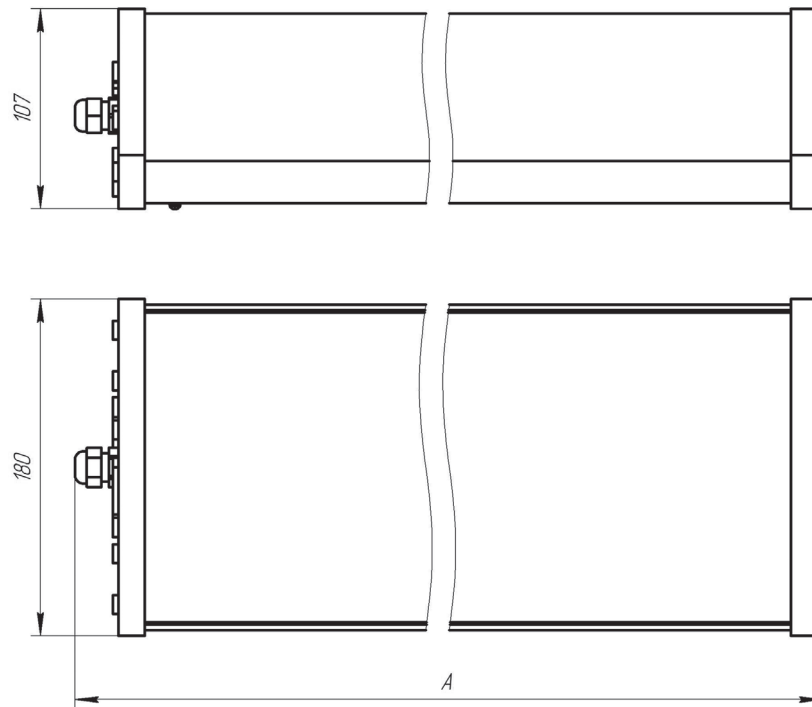


**A - cosine**  
Spektr-70

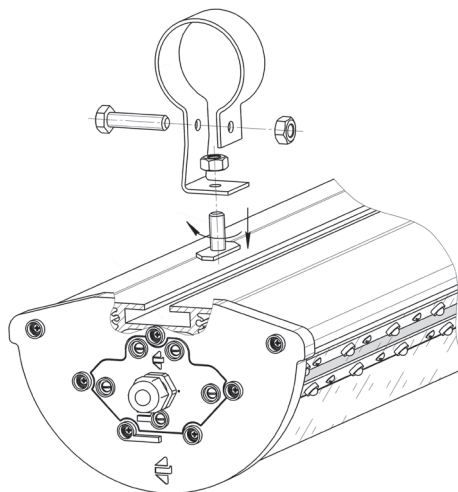


# OUTDOOR ILLUMINATION

## DIMENSION DRAWINGS



## MOUNTING





**LYUMEN-4 IP 65**

# OUTDOOR ILLUMINATION

## DESCRIPTION

**Outdoor illumination** of production facilities, industrial areas, agricultural structures, sport objects

**LED technology** with a high luminous efficiency with rated lumen-maintenance life  
**L70F10 (50000 hours) and L50F50 (100000 hours)**

**High lumen** output LED

**Reliable housing**

Warranty period – **5 years**

## TECHNICAL DATA

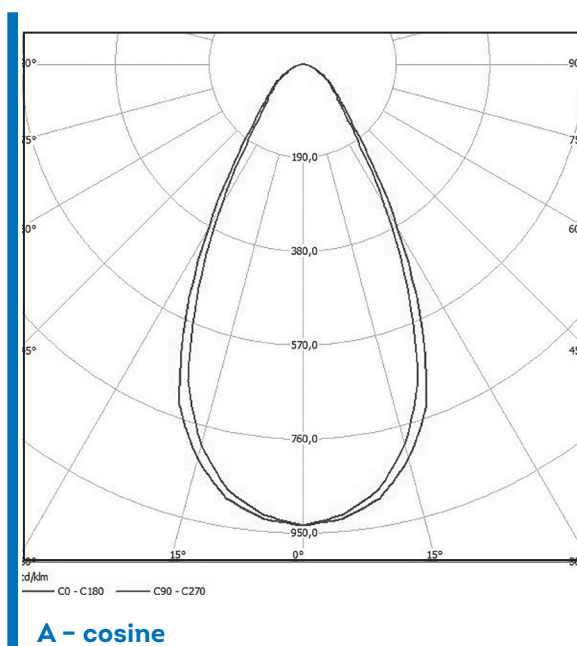
<b>Type of protection</b>	Certificate	EAC
	Protection degree	IP65
	Ambient temperature	-40°C÷+50°C
<b>Electrical data</b>	Supply voltage, VAC	140÷265
	Supply voltage, VDC	200÷370
	Frequency, Hz	50±10%
	Color temperature, K	3000÷6000
	Durability, hours	100000
	Warranty, years	5
<b>Construction</b>	Housing	Anodized aluminum profile with plastic end covers
	Diffuser	Heat-strengthened glass
	Gasket	Silicone
	Overall dimensions, mm	See Model code table
	Weight, kg	See Model code table
	Mounting	Ceiling

# SERIES LYUMEN-4 IP 65

MODEL CODE

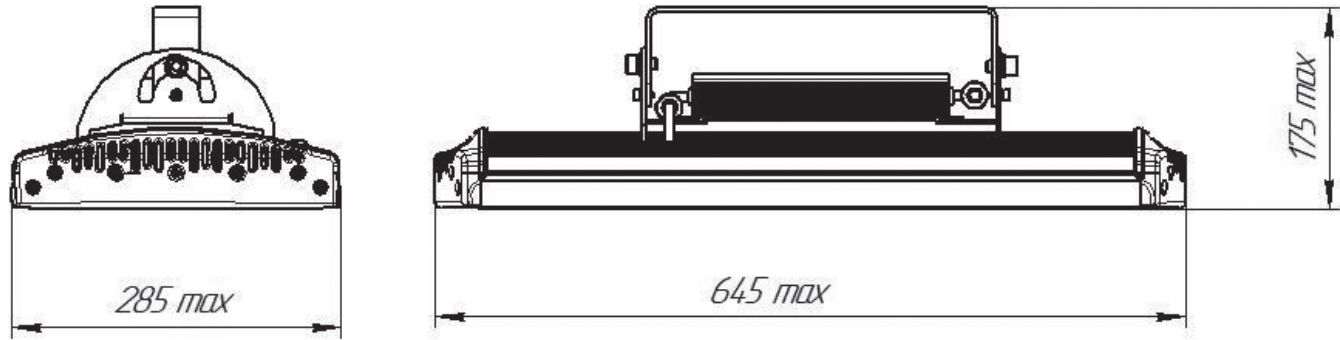
Model catalogue number	Luminous flux, lm	Power consumption, W	Overall dimensions (AxBxC), mm	Weight, kg
Lyumen-4 IP 65	26500	240	645x285x175	12

## LIGHT DISTRIBUTION CURVE

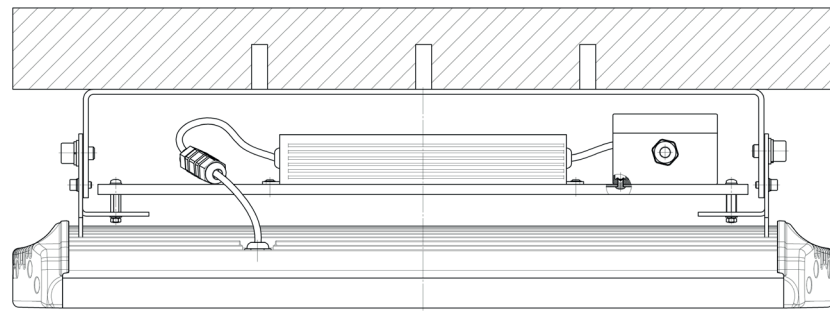


# OUTDOOR ILLUMINATION

## DIMENSION DRAWINGS

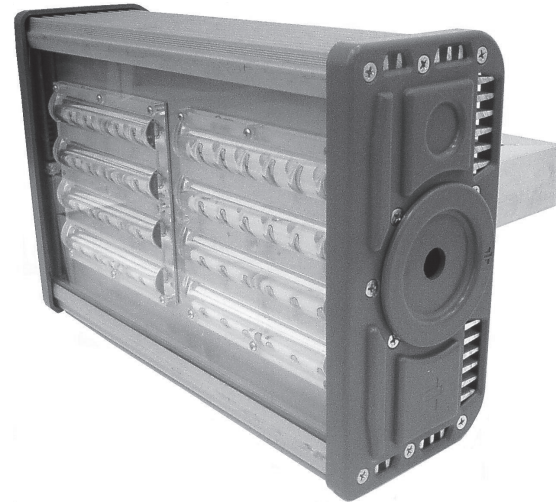


## MOUNTING

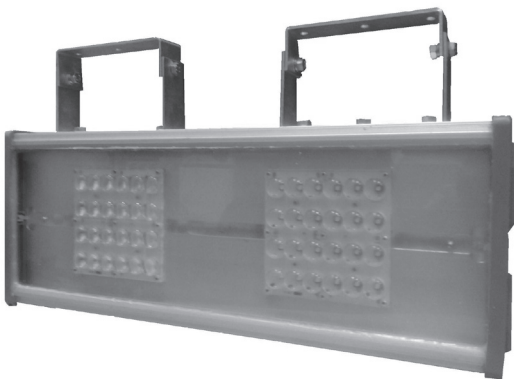




**Luch-24**



**Luch-48**



**Luch-75**

# OUTDOOR ILLUMINATION

## DESCRIPTION

**Outdoor illumination** of landscape, building facades

**LED technology** with a high luminous efficiency with rated lumen-maintenance life  
**L70F10 (50000 hours) and L50F50 (100000 hours)**

Light distribution curve according to **the customer's choice**

**Reliable housing**

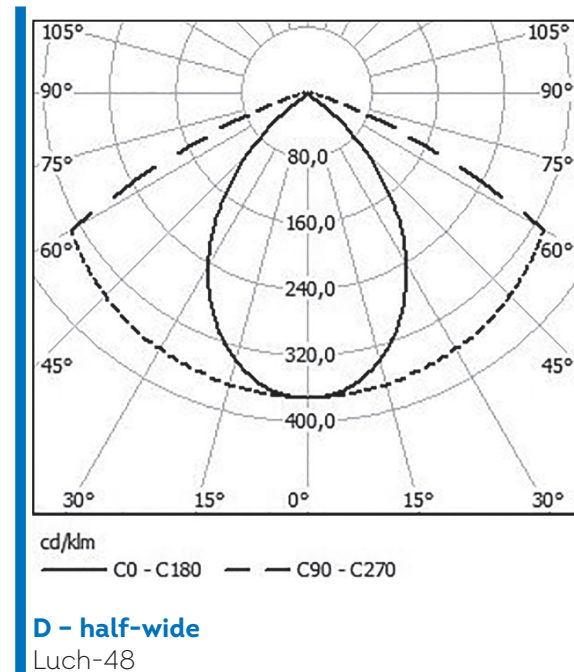
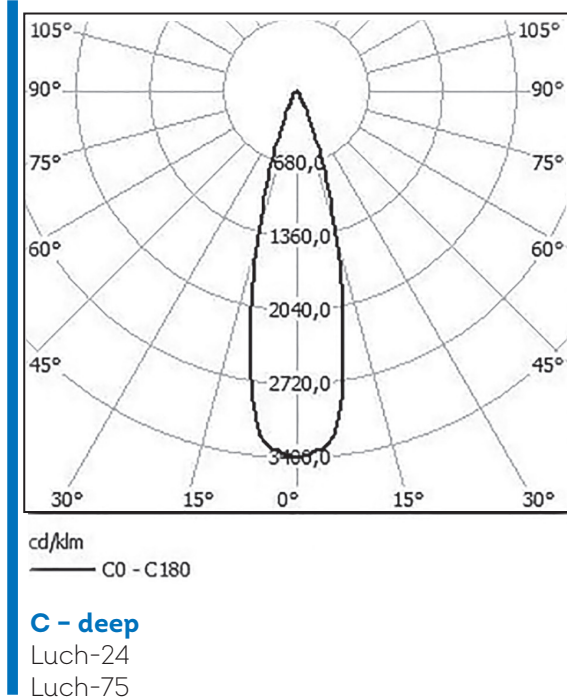
Warranty period – **5 years**

## TECHNICAL DATA

<b>Type of protection</b>	Certificate	EAC
	Protection degree	IP65
	Ambient temperature	-40°C÷+60°C
<b>Electrical data</b>	Supply voltage, VAC	140÷265
	Supply voltage, VDC	200÷370
	Frequency, Hz	50±10%
	Color temperature, K	4000÷6000
	Durability, hours	100000
	Warranty, years	5
<b>Construction</b>	Housing	Anodized aluminum profile with plastic end covers
	Diffuser	Polycarbonate glass
	Gasket	Silicone
	Overall dimensions, mm	See <i>Model code</i> table
	Weight, kg	See <i>Model code</i> table
	Mounting	Wall, ceiling, surface-mounted

Model catalogue number	Luminous flux, lm	Power consumption, W	Overall dimensions (AxBxC), mm	Weight, kg
<b>Luch-48</b> (SPS-D-220-017-N-MCC1)	6200	60	340x209x245	5,5
<b>Luch-24</b> (SPS-C-220-016-N-MCC1)	8500	100	340x209x245	5,2
<b>Luch-75</b> (SPS-C-220-015-N-MCC1)	9300	90	462x350x140	8,0

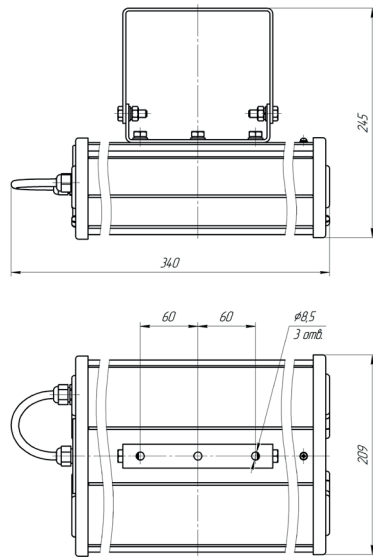
## LIGHT DISTRIBUTION CURVE



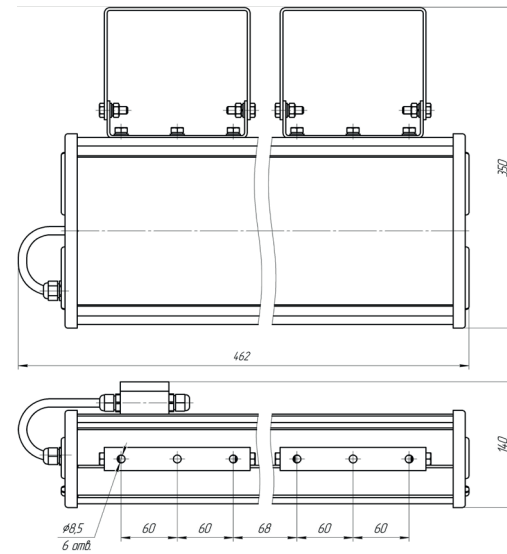


# OUTDOOR ILLUMINATION

## DIMENSION DRAWINGS

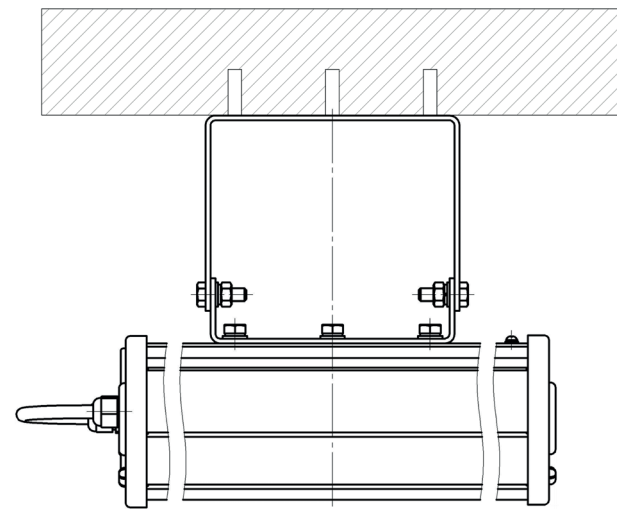
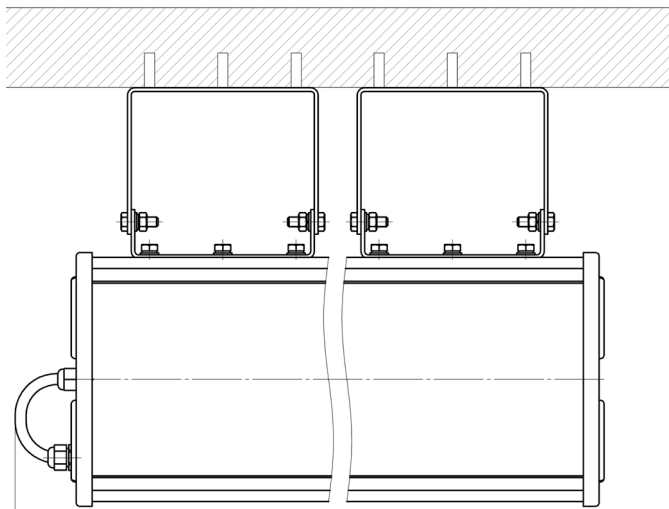


Luch - 24, 48



Luch - 75

## MOUNTING





**Park-4**



**Park-6**

# OUTDOOR ILLUMINATION

## DESCRIPTION

**Outdoor illumination** of squares, parks, townhouse villages

**LED technology** with a high luminous efficiency with rated lumen-maintenance life  
**L70F10 (50000 hours) and L50F50 (100000 hours)**

**Aesthetically** designed housing

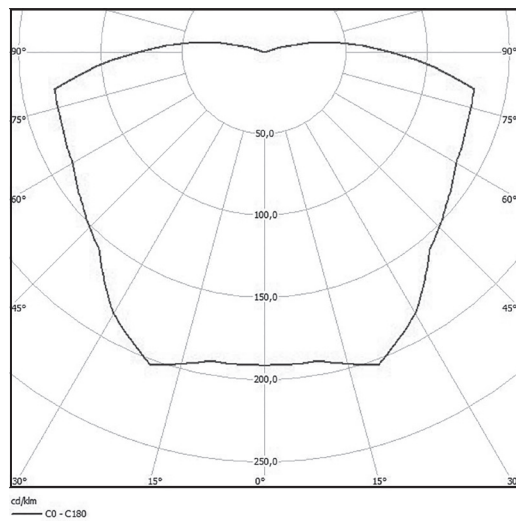
Warranty period - **5 years**

## TECHNICAL DATA

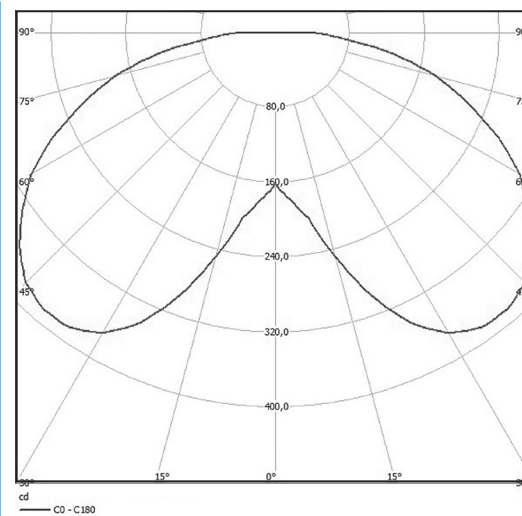
Type of protection	Certificate	EAC
	Protection degree	IP44
	Ambient temperature	-40°C÷+60°C
Electrical data	Supply voltage, VAC	140÷265
	Supply voltage, VDC	200÷370
	Frequency, Hz	50±10%
	Color temperature, K	W - 3000÷4000, N - 4000÷6000
	Durability, hours	100000
	Warranty, years	5
Construction	Housing	Steel covered with plastic / paint
	Diffuser	Polycarbonate glass
	Gasket	None
	Overall dimensions, mm	See Model code table
	Weight, kg	See Model code table
	Mounting	Stanchion

Model catalogue number	Luminous flux, lm	Power consumption, W	Overall dimensions (AxBxC), mm	Weight, kg
<b>Park-4</b> (SSO-A-220-033-N/W-MCC1)	4000	42	∅ 440x410	3,0
<b>Park-6</b> (SSO-A-220-035-N/W-MCC1)	2100	30	∅ 455x678	6,0

## LIGHT DISTRIBUTION CURVE



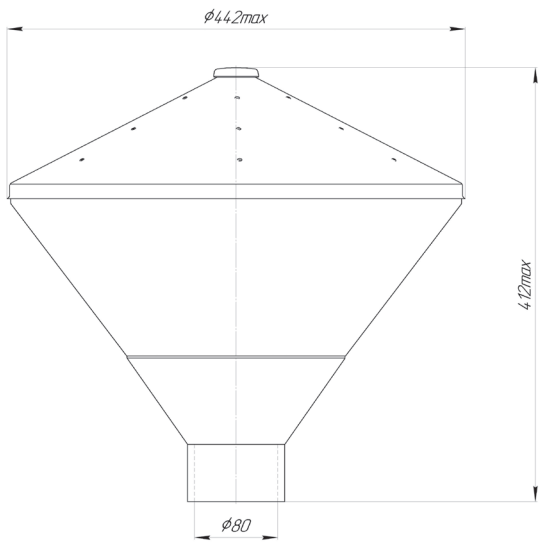
**A - cosine**  
Park-4



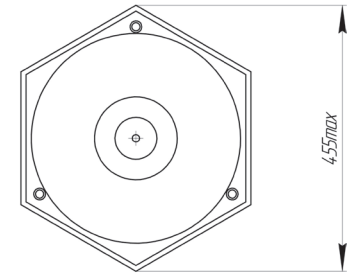
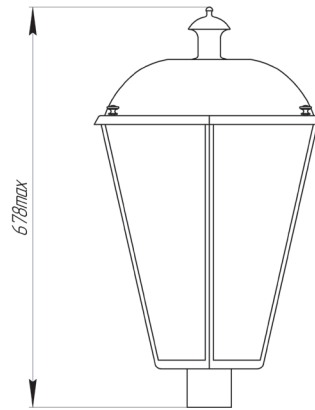
**A - cosine**  
Park-6

# OUTDOOR ILLUMINATION

## DIMENSION DRAWINGS

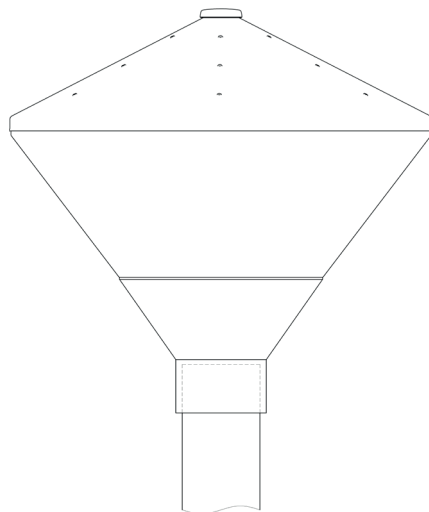


Park-4

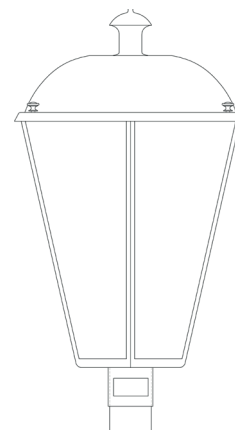


Park-6

## MOUNTING



Park-4



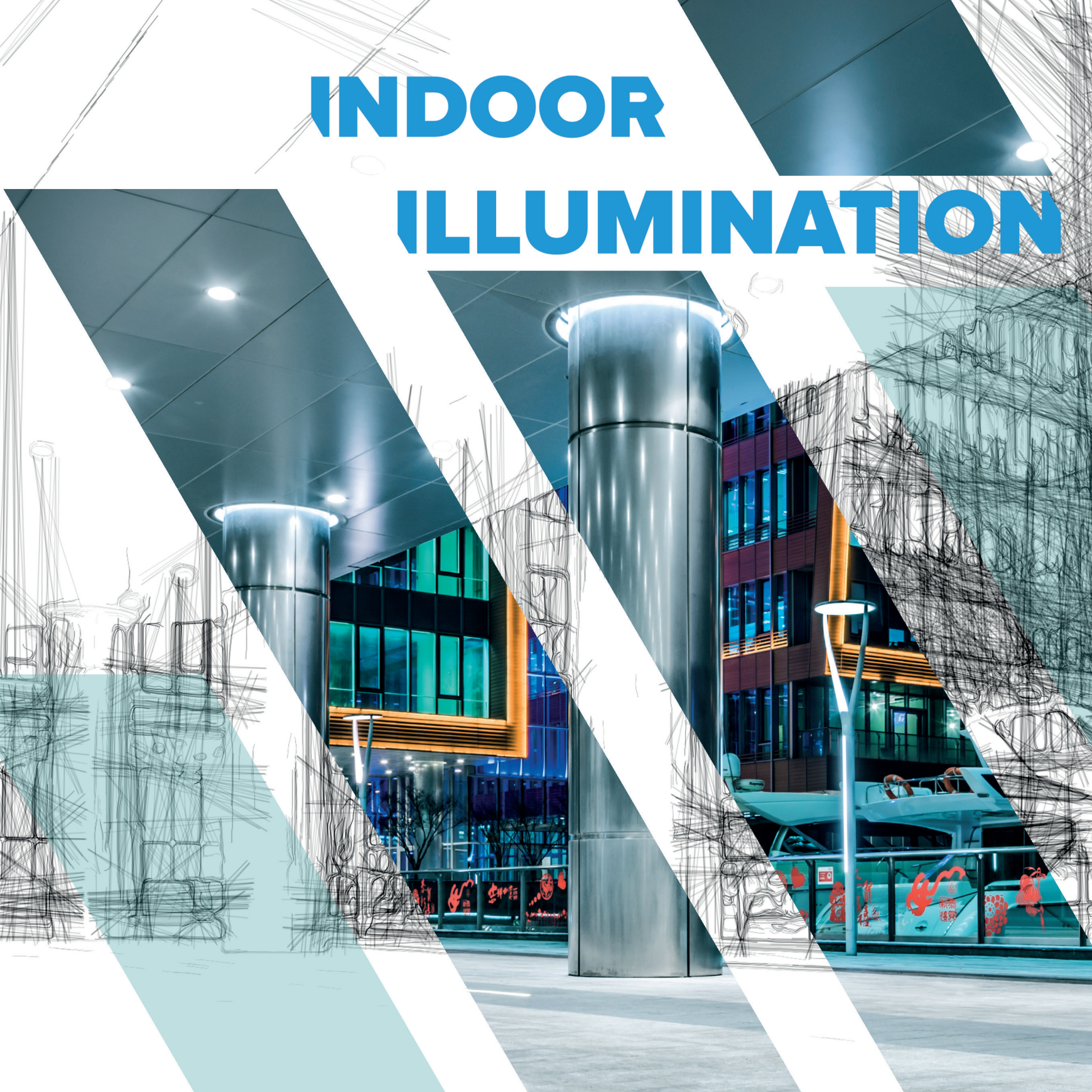
Park-6







# INDOOR ILLUMINATION

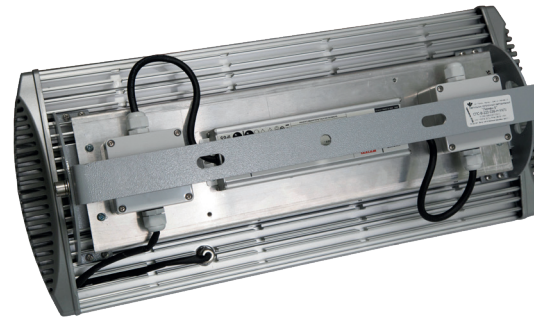




Lyumen-4



Lyumen-5/5M





# INDOOR ILLUMINATION

## DESCRIPTION

Indoor illumination of  
**production facilities, industrial areas, agricultural structures, sport objects**

**LED technology** with a high luminous efficiency with rated lumen-maintenance life  
**L70F10 (50000 hours) and L50F50 (100000 hours)**

**High lumen** output LED

**Reliable** housing

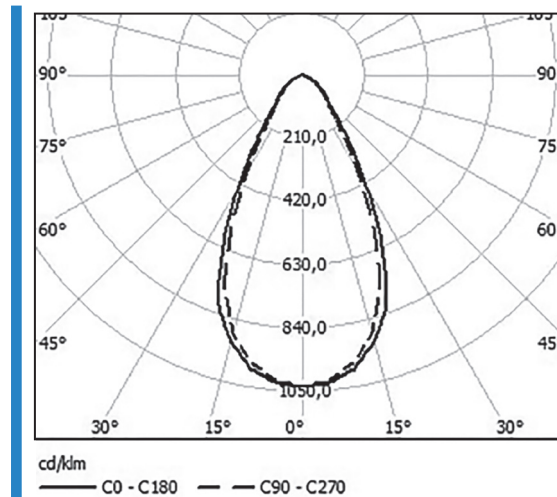
Warranty period – **5 years**

## TECHNICAL DATA

<b>Type of protection</b>	Certificate	EAC
	Protection degree	IP54
	Ambient temperature	See <i>Model code</i> table
<b>Electrical data</b>	Supply voltage, VAC	140÷265
	Supply voltage, VDC	200÷370
	Frequency, Hz	50±10%
	Color temperature, K	W - 3000-4000, N - 4000-6000
	Durability, hours	100000
	Warranty, years	5
<b>Construction</b>	Housing	Anodized aluminum
	Diffuser	Heat-strengthened glass
	Gasket	Silicone
	Overall dimensions, mm	See <i>Model code</i> table
	Weight, kg	See <i>Model code</i> table
	Mounting	Wall, ceiling

Model catalogue number	Luminous flux, lm	Power consumption, W	Ambient temperature, °C	Overall dimensions (AxBxC), mm	Weight, kg
<b>Lyumen-4</b> (SPS-C-220-036-N/W-MCC1)	26500	240	-10÷+60	630x285x165	12,0
<b>Lyumen-4M</b> (SPS-C-220-037-N/W-MCC1)	26500	240	-10÷+70	630x285x165	13,0
<b>Lyumen-5</b> (SPS-C-220-038-N/W-MCC1)	22200	185	-10÷+60	485x285x165	9,0
<b>Lyumen-5M</b> (SPS-C-220-039-N/W-MCC1)	23000	210	-10÷+70	630x285x165	12,0

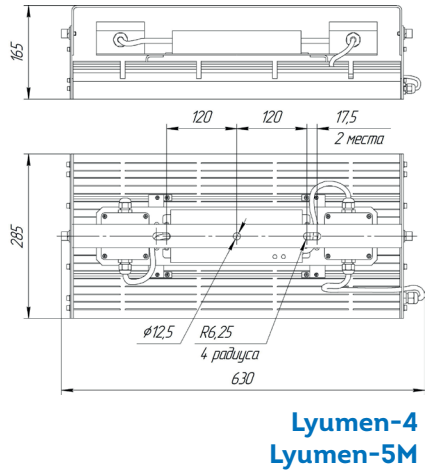
## LIGHT DISTRIBUTION CURVE



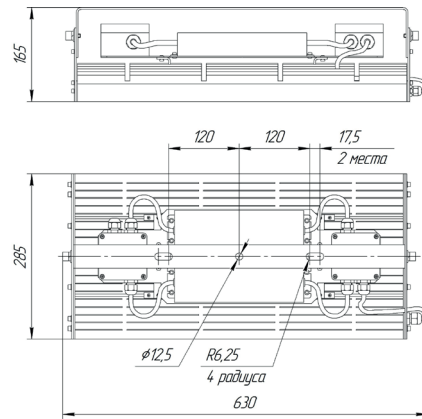
C - deep

# INDOOR ILLUMINATION

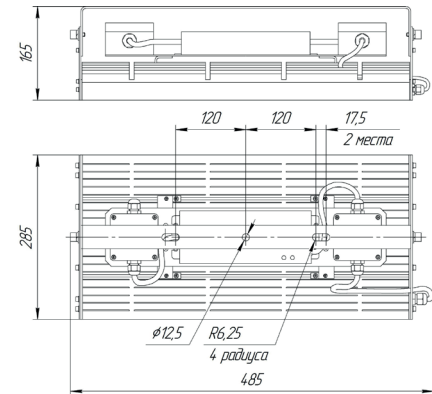
## DIMENSION DRAWINGS



**Lyumen-4**  
**Lyumen-5M**

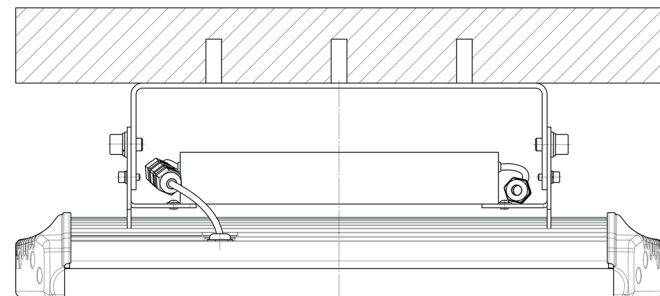
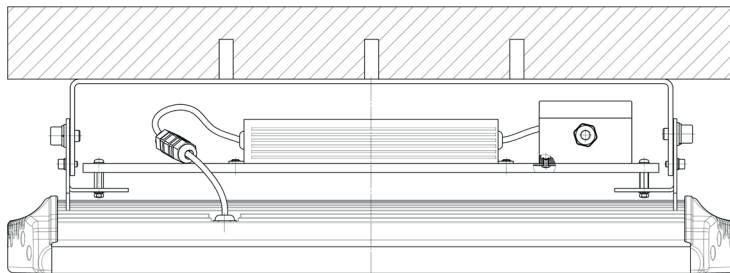


**Lyumen-4M**



**Lyumen-5**

## MOUNTING





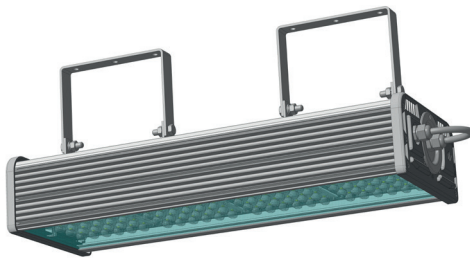
Trassa-1A



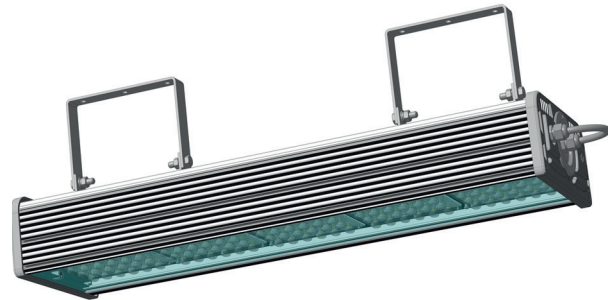
Trassa-2A



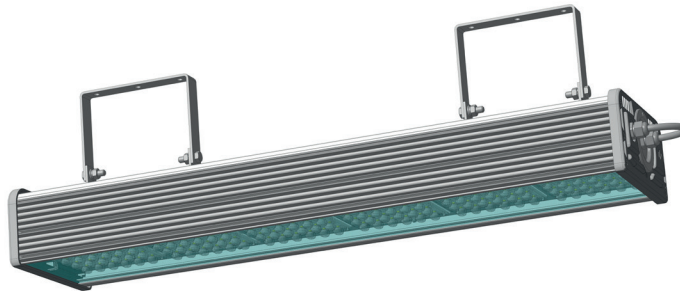
Trassa-3A



Trassa-4A



Trassa-5A



Trassa-6A

# INDOOR ILLUMINATION

## DESCRIPTION

Indoor illumination of  
**hangars, public spaces, production facilities, entries, utility rooms, underground walkways**

**LED technology** with a high luminous efficiency with rated lumen-maintenance life  
**L70F10 (50000 hours) and L50F50 (100000 hours)**

Light distribution curve according to **the customer's choice**

**Reliable** housing

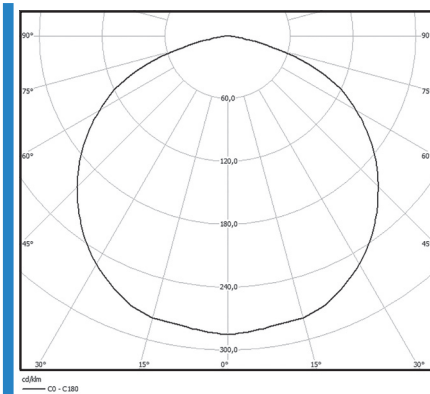
Warranty period – **5 years**

## TECHNICAL DATA

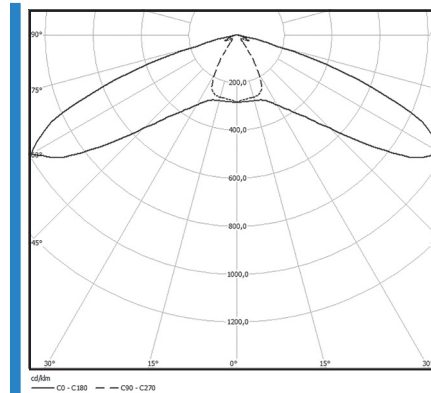
Type of protection	Certificate	EAC
	Protection degree	IP65
	Ambient temperature	- 63°C++ 60°
Electrical data	Supply voltage, VAC	140÷265
	Supply voltage, VDC	200÷370
	Frequency, Hz	50±10%
	Color temperature, K	W - 3000÷4000, N - 4000÷6000
	Durability, hours	100000
	Warranty, years	5
Construction	Housing	Anodized aluminum profile with plastic end covers
	Diffuser	Polycarbonate glass
	Gasket	Silicone
	Overall dimensions, mm	See <i>Model code</i> table
	Weight, kg	See <i>Model code</i> table
	Mounting	Wall, ceiling

Model catalogue number	Luminous flux, lm	Power consumption, W	Overall dimensions (AxBxC), mm	Weight, kg
<b>Trassa-1A</b> (SPS-A/B/C-220-001-N/W-MCC1)	3750	30	265x209x245	3,6
<b>Trassa-2A</b> (SPS-A/B/C-220-002-N/W-MCC1)	7500	60	360x209x245	5,9
<b>Trassa-3A</b> (SPS-A/B/C-220-003-N/W-MCC1)	11250	90	482x209x245	7,9
<b>Trassa-4A</b> (SPS-A/B/C-220-004-N/W-MCC1)	15000	120	600x209x245	10,5
<b>Trassa-5A</b> (SPS-A/B/C-220-005-N/W-MCC1)	18750	150	740x209x245	12,1
<b>Trassa-6A</b> (SPS-A/B/C-220-006-N/W-MCC1)	22500	180	860x209x245	14,0

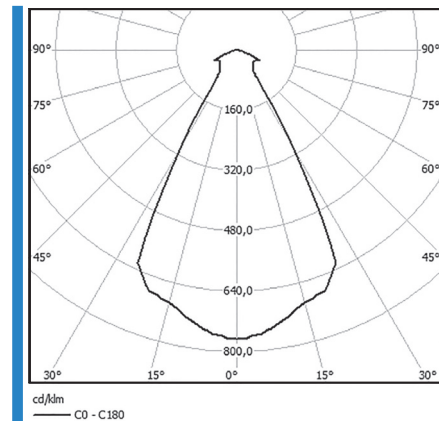
## LIGHT DISTRIBUTION CURVE



**A - cosine**



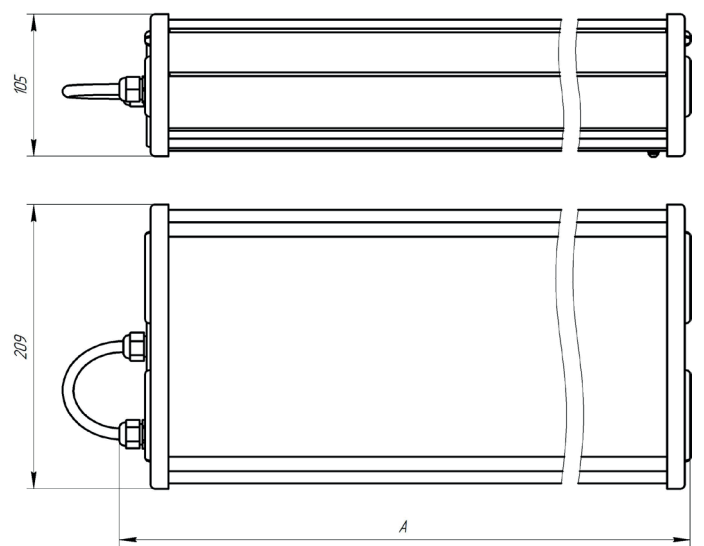
**B - wide**



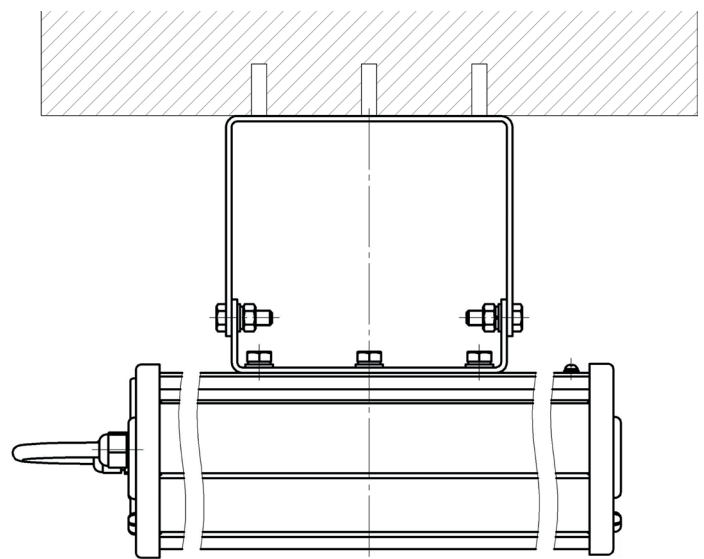
**C - deep**

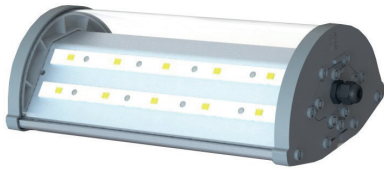
# INDOOR ILLUMINATION

## DIMENSION DRAWINGS



## MOUNTING





**Spektr-30A**



**Spektr-50A**



**Spektr-70A**



**Spektr-100A**



# INDOOR ILLUMINATION

## DESCRIPTION

Indoor illumination of  
**hangars, halls, public spaces, production facilities, entries, utility rooms**

**LED technology** with a high luminous efficiency with rated lumen-maintenance life  
**L70F10 (50000 hours) and L50F50 (100000 hours)**

Light distribution curve according to the **customer's choice**

**Aesthetically designed** housing

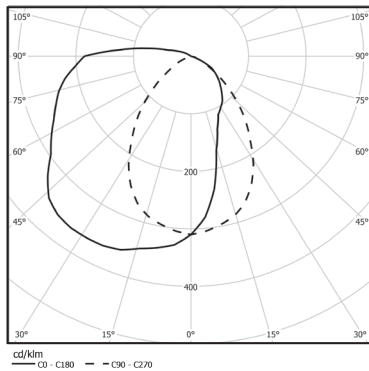
Warranty period – **5 years**

## TECHNICAL DATA

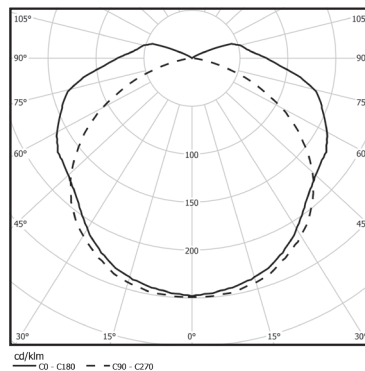
Type of protection	Certificate	EAC
	Protection degree	IP65
	Ambient temperature	- 40°C÷+ 60°C
Electrical data	Supply voltage, VAC	140÷265
	Supply voltage, VDC	200÷370
	Frequency, Hz	50± 10%
	Color temperature, K	W - 3000÷4000, N - 4000÷6000
	Durability, hours	100000
	Warranty, years	5
Construction	Housing	Anodized aluminum profile with plastic end covers
	Diffuser	Polycarbonate glass
	Gasket	Silicone
	Overall dimensions, mm	See Model code table
	Weight, kg	See Model code table
	Mounting	Wall, ceiling

Model catalogue number	Luminous flux, lm	Power consumption, W	Overall dimensions (AxBxC), mm	Weight, kg
<b>Spektr-30A</b> (SSO-A-220-003-01-N/W-MCC1)	3250	26	310x180x107	3,0
<b>Spektr-50A</b> (SSO-A-220-004-01-N/W-MCC1)	7750	62	635x180x107	5,5
<b>Spektr-70A</b> (SSO-A-220-010-01-N/W-MCC1)	11250	90	715x180x107	6,0
<b>Spektr-100A</b> (SSO-A-220-005-01-N/W-MCC1)	15620	125	1228x180x107	10,0

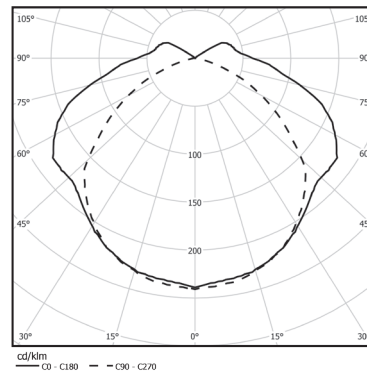
## LIGHT DISTRIBUTION CURVE



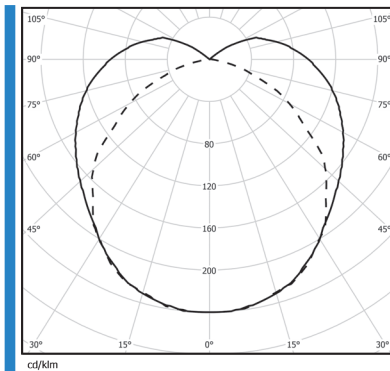
**A - cosine** Spektr-30A



**A - cosine** Spektr-50A



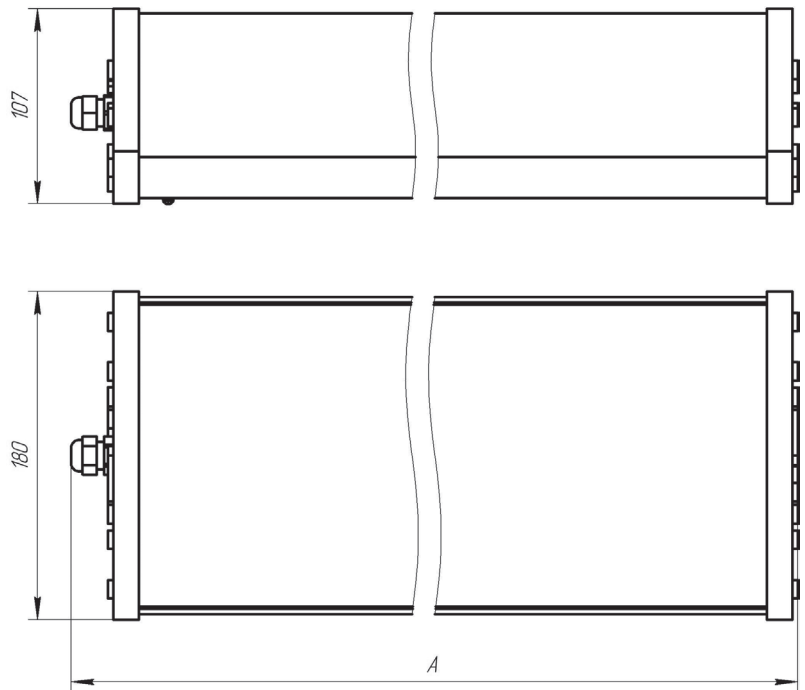
**A - cosine** Spektr-70A



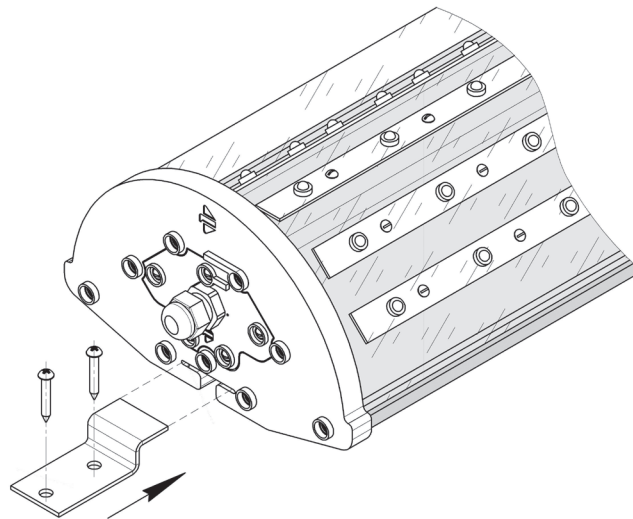
**A - cosine** Spektr-100A

# INDOOR ILLUMINATION

## DIMENSION DRAWINGS



## MOUNTING





**Liniya-1-P**  
**Liniya-1-O**



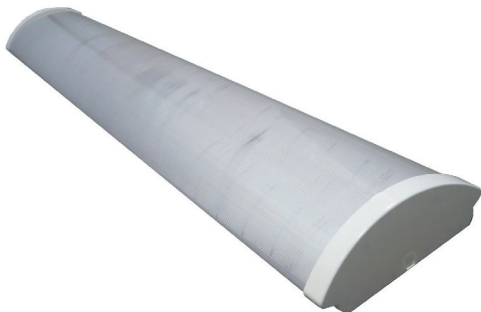
**Liniya-12**



**Liniya-16**



**Liniya-18**



**Liniya-20**



**Liniya-19**  
**Liniya-21**

# INDOOR ILLUMINATION

## DESCRIPTION

Indoor illumination of  
**production facilities, halls, public spaces, utility rooms, underground walkways**

**LED technology** with a high luminous efficiency with rated lumen-maintenance life  
**L70F10 (50000 hours) and L50F50 (100000 hours)**

**Aesthetically designed** housing

Warranty period – **5 years**

## TECHNICAL DATA

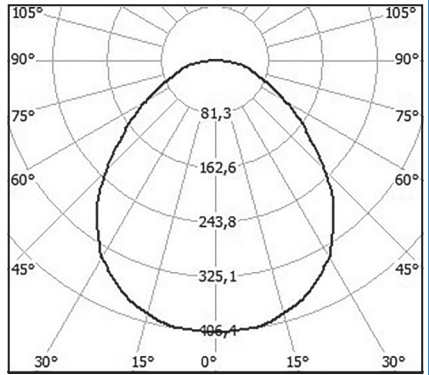
<b>Type of protection</b>	Certificate	EAC
	Protection degree	See <i>Model code table</i>
	Ambient temperature	- 40°C÷+ 60°C
<b>Electrical data</b>	Supply voltage, VAC	140÷265
	Supply voltage, VDC	200÷370
	Frequency, Hz	50±10%
	Color temperature, K	W - 3000÷4000, N - 4000÷6000
	Durability, hours	100000
	Warranty, years	5
<b>Construction</b>	Housing	See <i>Model code table</i>
	Diffuser	See <i>Model code table</i>
	Gasket	Silicone
	Overall dimensions, mm	See <i>Model code table</i>
	Weight, kg	See <i>Model code table</i>
	Mounting	Wall, ceiling

Model catalogue number	Luminous flux, lm	Power consumption W	IP	Housing	Diffuser	Overall dimensions (AxBxC), mm	Weight, kg.,
<b>Liniya-1-P</b> (SSP-A-220-034-P-N/W-MCC)	5700	48	40	Steel covered with paint	Polycarbonate glass	1200x200x40	3,3
<b>Liniya-1-O</b> (SSP-A-220-034-O-N/W-MCC)	5300	48	40	Steel covered with paint	Polycarbonate glass	1200x200x40	3,3
<b>Liniya-1-P-1</b> (SSP-A-220-034-P-1-N/W-MCC)	4300	36	40	Plastic with steel base covered with paint	Polycarbonate glass	1200x235x40	2,5
<b>Liniya-1-O-1</b> (SSP-A-220-034-O-1-N/W-MCC)	3900	36	40	Plastic with steel base covered with paint	Polycarbonate glass	1200x235x40	2,5
<b>Liniya-12</b> (SSP-A-220-012-N/W-MCC)	5700	48	20	Plastic covers with steel base covered with paint	Polycarbonate glass	1230x138x55	3,2
<b>Liniya-12-1</b> (SSP-A-220-043-N/W-MCC1)	4800	40	20	Plastic covers with steel base covered with paint	Polycarbonate glass	1230x138x55	3,2
<b>Liniya-16</b> (SSP-A-220-011-N/W-MCC)	2700	25	40	Plastic with steel base	Polycarbonate glass	1270x64x34	1,2
<b>Liniya-18</b> (SSP-A-220-021-N/W-MCC1)	2600	24	65	Plastic with steel base	Polycarbonate glass	1279x108x97	2,0
<b>Liniya-19</b> (SSP-A-220-022-N/W-MCC1)	4300	36	65	Plastic with steel base	Polycarbonate glass	1279x147x108	2,7
<b>Liniya-20</b> (SSP-A-220-023-N/W-MCC1)	4400	40	20	Plastic covers with steel base	Polycarbonate glass	1245x190x71	4,0
<b>Liniya-21</b> (SSP-A-220-029-N/W-MCC1)	5700	48	65	Plastic with steel base	Polycarbonate glass	1279x147x108	2,7



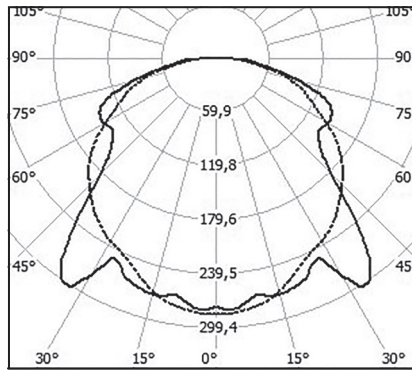
# INDOOR ILLUMINATION

## LIGHT DISTRIBUTION CURVE



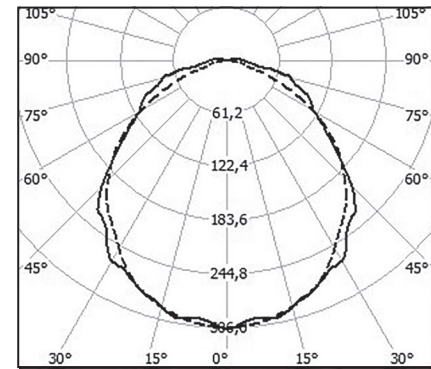
cd/dm  
 — C0 - C180

**A - cosine**  
 Liniya-1-P  
 Liniya-1-O  
 Liniya-1-P-1  
 Liniya-1-O-1



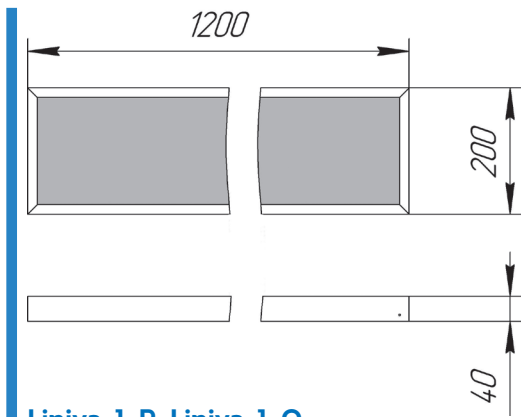
cd/dm  
 — C0 - C180    - - C90 - C270

**A - cosine**  
 Liniya-12  
 Liniya-12-1  
 Liniya-16  
 Liniya-18  
 Liniya-19  
 Liniya-21

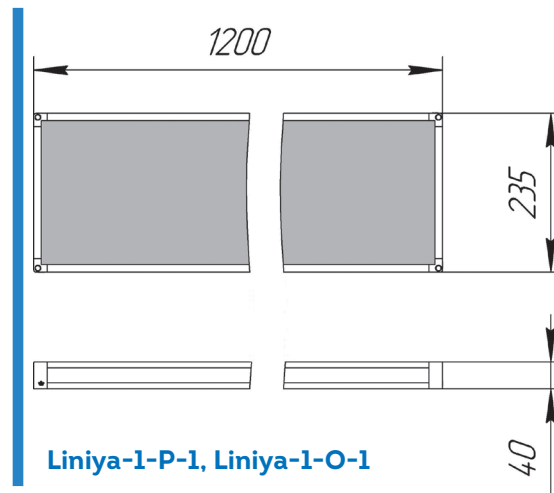


cd/dm  
 — C0 - C180    - - C90 - C270

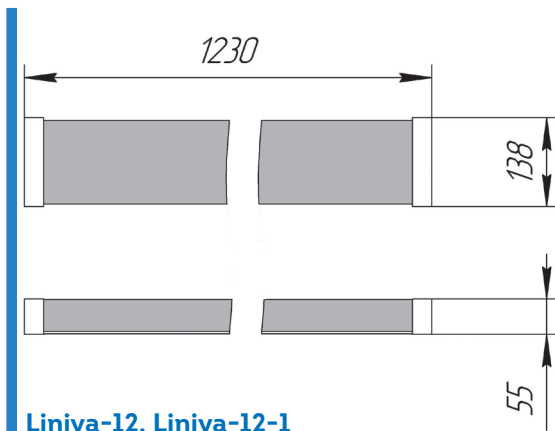
**A - cosine**  
 Liniya-20



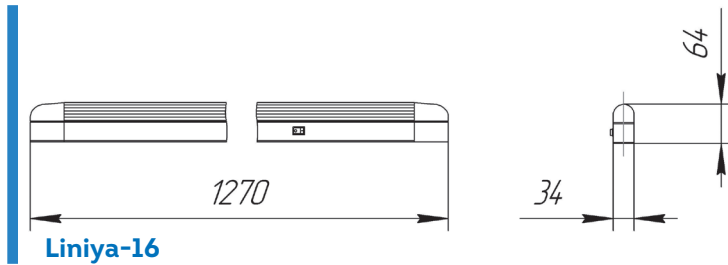
**Liniya-1-P, Liniya-1-O**



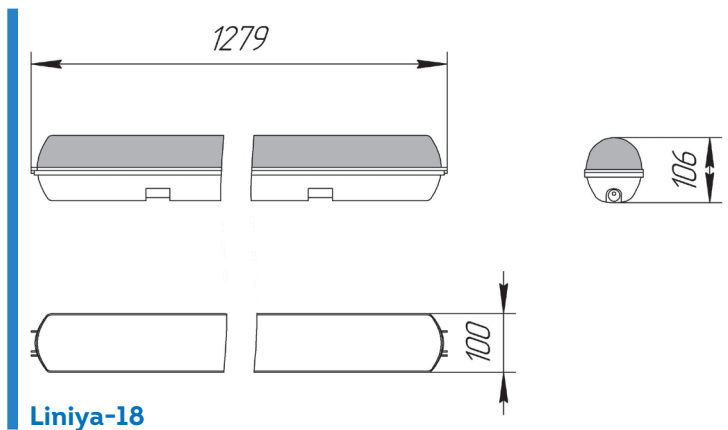
**Liniya-1-P-1, Liniya-1-O-1**



**Liniya-12, Liniya-12-1**

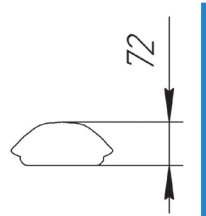
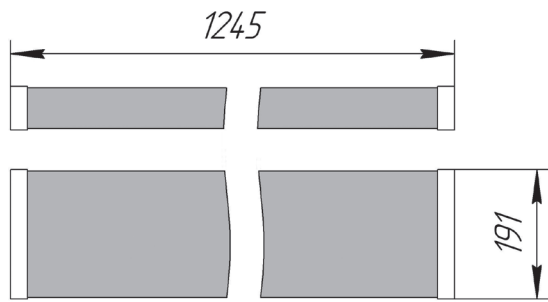


**Liniya-16**

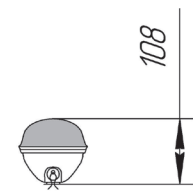
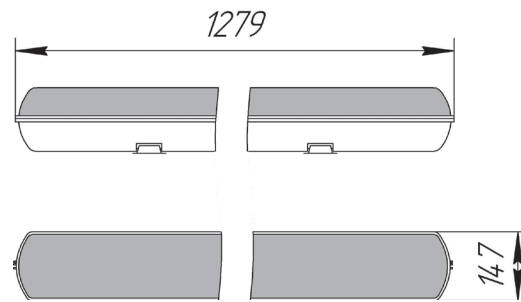


**Liniya-18**

# INDOOR ILLUMINATION

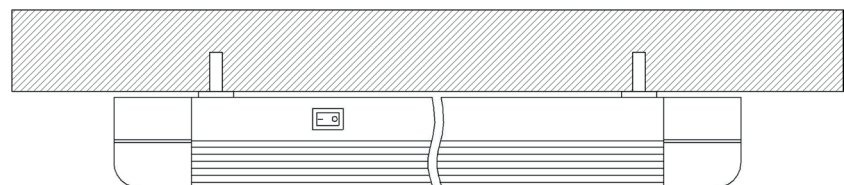


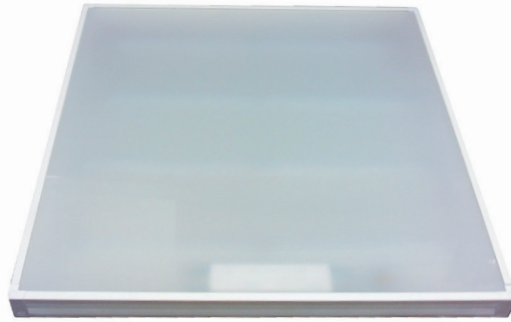
Liniya-20



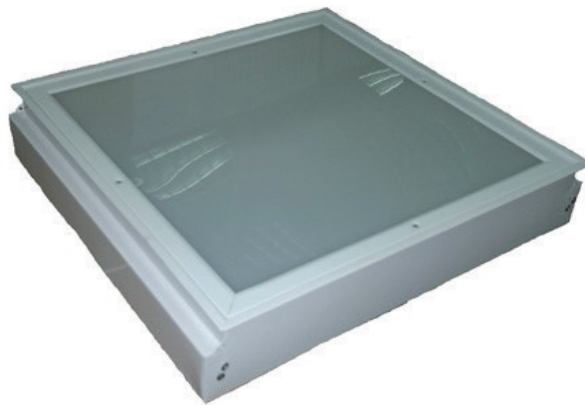
Liniya-19, Liniya-21

## MOUNTING





**Armstrong-14-O/P**  
**Armstrong-15-O/P**  
**Armstrong-16-O/P**



**Armstrong-17-O**

# INDOOR ILLUMINATION

## DESCRIPTION

Indoor illumination of **public areas, industrial areas, offices**

**LED technology** with a high luminous efficiency with rated lumen-maintenance life  
**L70F10 (50000 hours) and L50F50 (100000 hours)**

**Aesthetically designed** housing

Warranty period - **5 years**

## TECHNICAL DATA

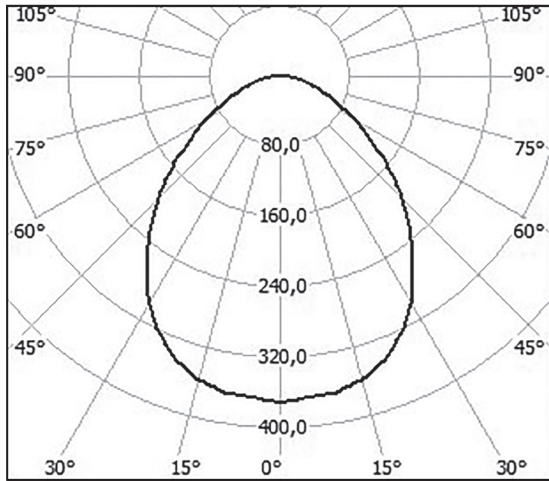
Type of protection	Certificate	EAC
	Protection degree	See Model code table
	Ambient temperature	- 30°C÷+ 60°C
Electrical data	Supply voltage, VAC	140÷265
	Supply voltage, VDC	200÷370
	Frequency, Hz	50±10%
	Color temperature, K	W - 3000÷4000, N - 4000÷6000
	Durability, hours	100000
	Warranty, years	5
Construction	Housing	See Model code table
	Diffuser	See Model code table
	Gasket	None
	Overall dimensions, mm	See Model code table
	Weight, kg	See Model code table
	Mounting	Ceiling: surface-mounted/built-in

Model catalogue number	Luminous flux, lm	Power consumption W	IP	Housing	Diffuser	Overall dimensions (AxBxC), mm	Weight, kg.,
<b>Armstrong-14-O/P</b> (SSP-A-220-014-O/P-N/W-MCC)	5700	48	40	Steel covered with paint	Opal/prismatic glass	595x595x40	4,5
<b>Armstrong-15-O/P</b> (SSP-A-220-015-O/P-N/W-MCC)	4700	39	40	Steel covered with paint	Opal/prismatic glass	595x595x40	4,5
<b>Armstrong-16-O/P</b> (SSP-A-220-016-O/P-N/W-MCC)	3600	30	40	Steel covered with paint	Opal/prismatic glass	595x595x40	4,5
<b>Armstrong-17-O</b> (SSP-A-220-019-O-N/W-MCC2)	5700	48	54	Steel covered with paint	Opal/prismatic glass	620x595x115	8,0
<b>Armstrong-14-O/P-1</b> (SSP-A-220-014-O/P-1-N/W-MCC)	5700	48	40	Plastic with steel base covered with paint	Opal/prismatic glass	595x595x40	3,0
<b>Armstrong-15-O/P-1</b> (SSP-A-220-015-O/P-1-N/W-MCC)	4700	39	40	Plastic with steel base covered with paint	Opal/prismatic glass	595x595x40	3,0
<b>Armstrong-16-O/P-1</b> (SSP-A-220-016-O/P-1-N/W-MCC)	3600	30	40	Plastic with steel base covered with paint	Opal/prismatic glass	595x595x40	3,0



# INDOOR ILLUMINATION

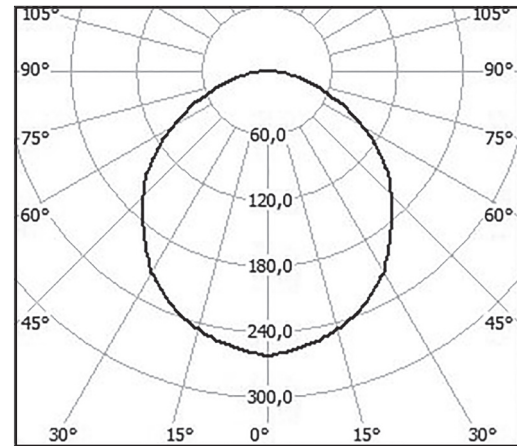
## LIGHT DISTRIBUTION CURVE



cd/dm  
— C0 - C180

### A - cosine

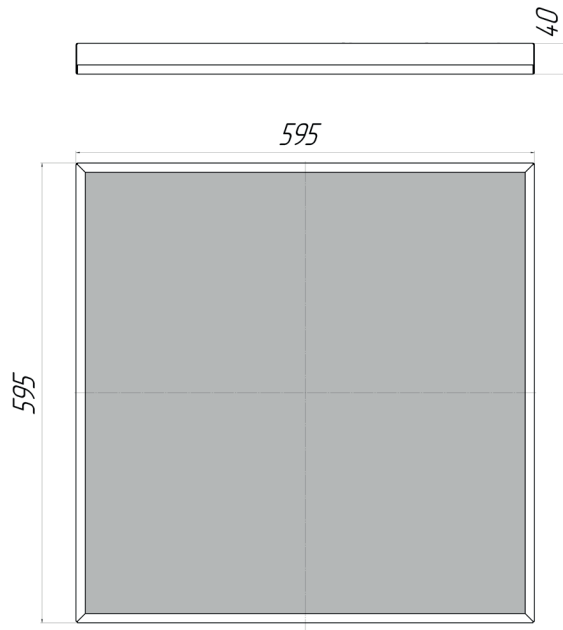
Armstrong-14-P  
Armstrong-15-P  
Armstrong-16-P  
Armstrong-14-P-1  
Armstrong-15-P-1  
Armstrong-16-P-1



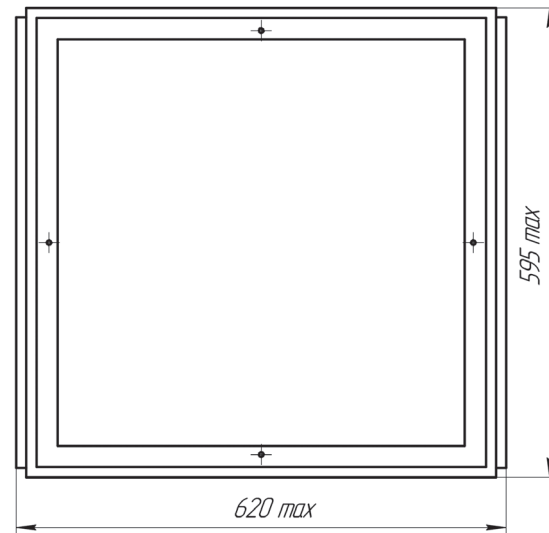
cd/dm  
— C0 - C180

### A - cosine

Armstrong-14-O,  
Armstrong-15-O  
Armstrong-16-O  
Armstrong-14-O-1  
Armstrong-15-O-1  
Armstrong-16-O-1  
Armstrong-17-O



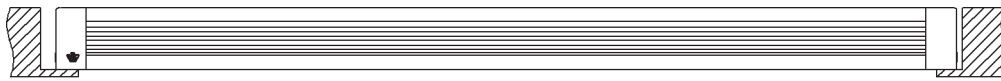
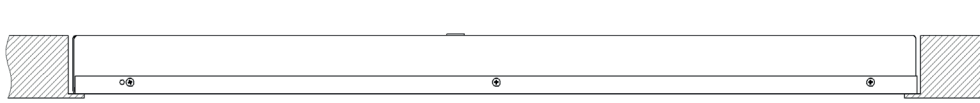
Armstrong-14-O/P  
Armstrong-14-O/P-1  
Armstrong-15-O/P  
Armstrong-15-O/P-1  
Armstrong-16-O/P  
Armstrong-16-O/P-1



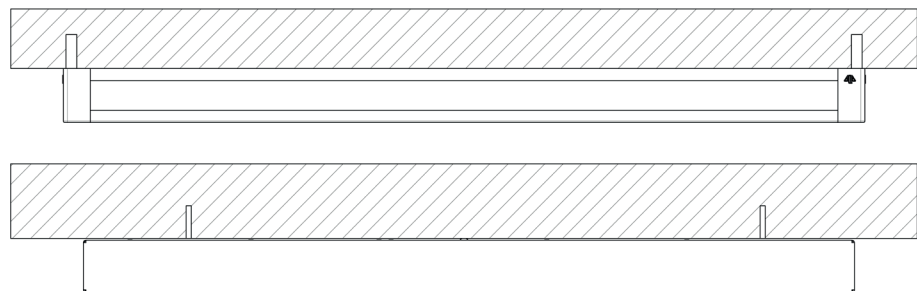
Armstrong-17-O

# INDOOR ILLUMINATION

## MOUNTING



Built-in



Surface-mounted



**Bonus-1**



**Bonus-8**  
**Bonus-8M**



**Bonus-8M-1**



**Bonus-10**



**Bonus-11**



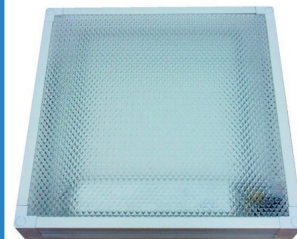
**Bonus-15**



**Bonus-16**



**Bonus-17**



**Bonus-18**

# INDOOR ILLUMINATION

## DESCRIPTION

Indoor illumination of **lift halls, entrances to the buildings, halls, staircase landings**

**LED technology** with a high luminous efficiency with rated lumen-maintenance life  
**L70F10 (50000 hours) and L50F50 (100000 hours)**

**Aesthetically designed** housing

Warranty period - **5 years**

## TECHNICAL DATA

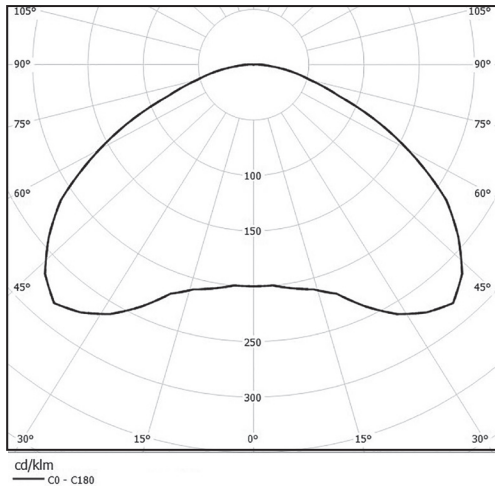
<b>Type of protection</b>	Certificate	EAC
	Protection degree	See Model code table
	Ambient temperature	- 40°C÷+ 60°C
<b>Electrical data</b>	Supply voltage, VAC	140÷265
	Supply voltage, VDC	200÷370
	Frequency, Hz	50±10%
	Color temperature, K	W - 3000÷4000, N - 4000÷6000
	Durability, hours	100000
	Warranty, years	5
<b>Construction</b>	Housing	See Model code table
	Diffuser	See Model code table
	Gasket	Silicone
	Overall dimensions, mm	See Model code table
	Weight, kg	See Model code table
	Mounting	Wall, ceiling

Model catalogue number	Luminous flux, lm	Power consumption W	IP	Housing	Diffuser	Overall dimensions (AxBxC), mm	Weight, kg.,
<b>Bonus</b> (SSO-A-220-002-N/W-MCC1)	990	7	65	Steel covered with paint	Borosilicate glass	187x175x85	1,5
<b>Bonus-1</b> (SSO-A-220-032-N/W-MCC1)	1400	13	65	Steel covered with paint	Borosilicate glass	187x175x85	1,5
<b>Bonus-8</b> (SSO-A-220-020-N/W-MCC1)	990	7	65	Steel covered with paint	Borosilicate glass	187x175x80	1,5
<b>Bonus-8M</b> (SSO-A-220-036-N/W-MCC1)	990	9	65	Steel covered with paint	Borosilicate glass	187x175x80	1,0
<b>Bonus-8M-1</b> (SSO-A-220-047-N/W-MCC1)	990	9	54	Steel covered with paint	Polycarbonate glass	347x80x58	0,55
<b>Bonus-10</b> (SSO-A-220-021-N/W-M2)	900	9	54	Plastic	Polycarbonate glass	315x72x68	0,4
<b>Bonus-11</b> (SSO-A-220-022-N/W-M2)	990	7	54	Plastic	Borosilicate glass	Ø228x100	1,5
<b>Bonus-15</b> (SSO-A-220-026-N-MCC)	1100	14	54	Steel covered with paint	Borosilicate glass	282x160x115	1,6
<b>Bonus-16</b> (SSO-A-220-027-N/W-M3.1)	1200	9	20	Steel covered with paint	Borosilicate glass	Ø310x90	1,1
<b>Bonus-17</b> (SSO-A-220-028-N/W-MCC2)	990	9	54	Steel covered with paint	Polycarbonate glass	258x117x115	0,55
<b>Bonus-18</b> (SSO-A-220-049-P-N/W-MCC)	1650	15	40	Plastic with steel base	Polycarbonate glass	250x250x40	1,2

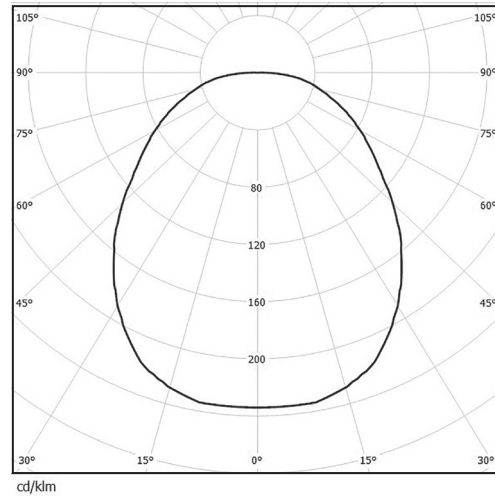


# INDOOR ILLUMINATION

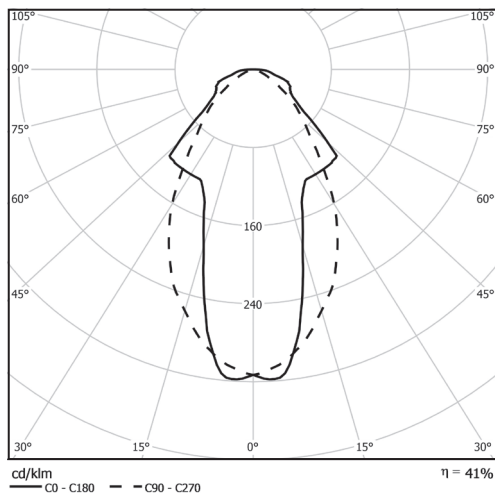
## LIGHT DISTRIBUTION CURVE



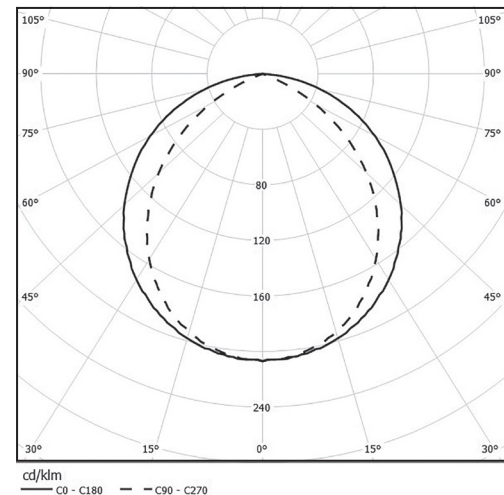
**A - cosine**  
 Bonus  
 Bonus-l



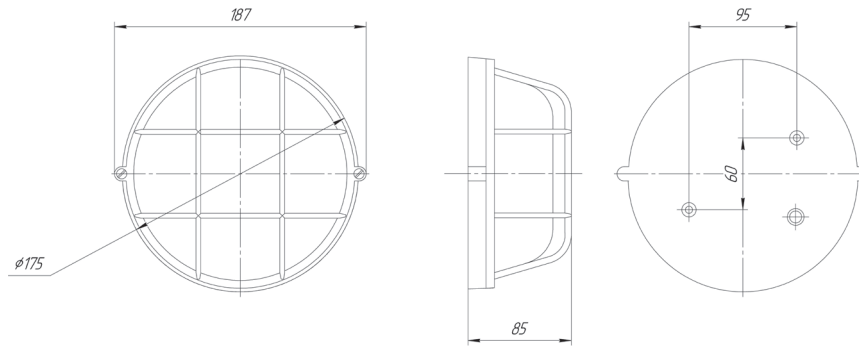
**A - cosine**  
 Bonus-8  
 Bonus-8M  
 Bonus-8M-1  
 Bonus-15  
 Bonus-16  
 Bonus-18



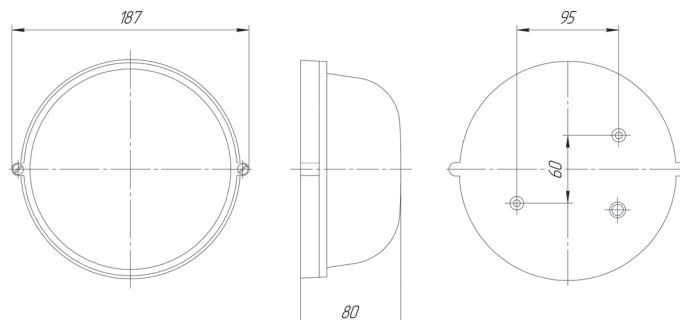
**A - cosine**  
 Bonus-10



**A - cosine**  
 Bonus-17



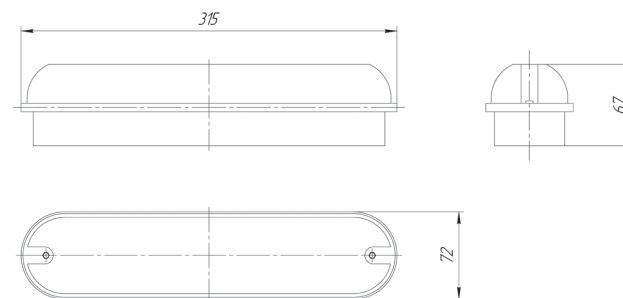
**Bonus, Bonus-1**



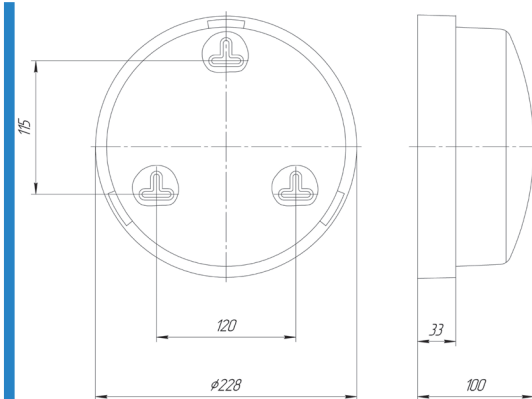
**Bonus-8, 8M**



**Bonus-8M-1**

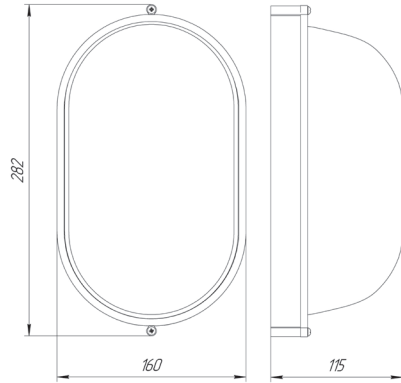


**Bonus-10**

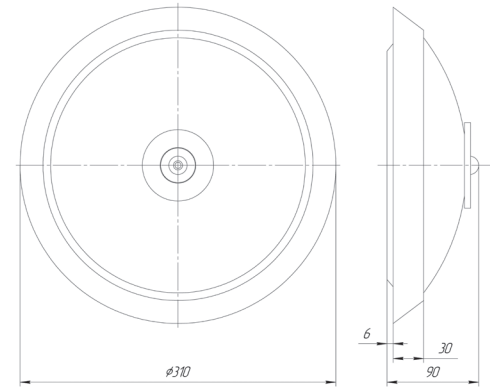


**Bonus-11**

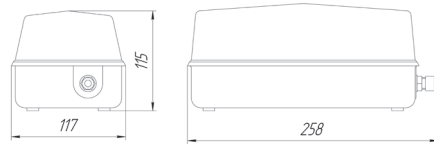
# INDOOR ILLUMINATION



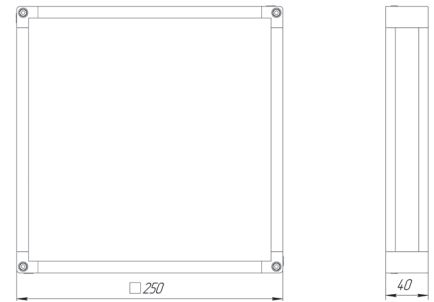
Bonus-15



Bonus-16

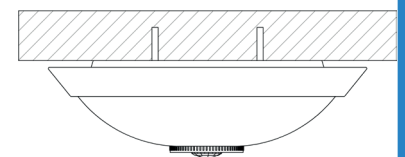
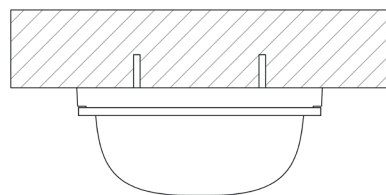
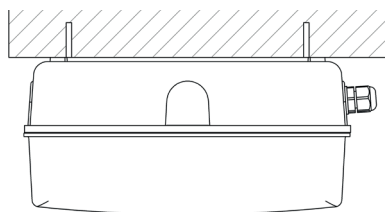
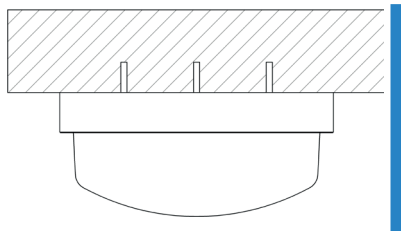


Bonus-17



Bonus-18

## MOUNTING





Lyuks

# INDOOR ILLUMINATION

## DESCRIPTION

Indoor illumination of  
**warehouses, rooms, halls, underground walkways**

**LED technology** with a high luminous efficiency with rated lumen-maintenance life  
**L70F10 (50000 hours) and L50F50 (100000 hours)**

**Reliable** housing

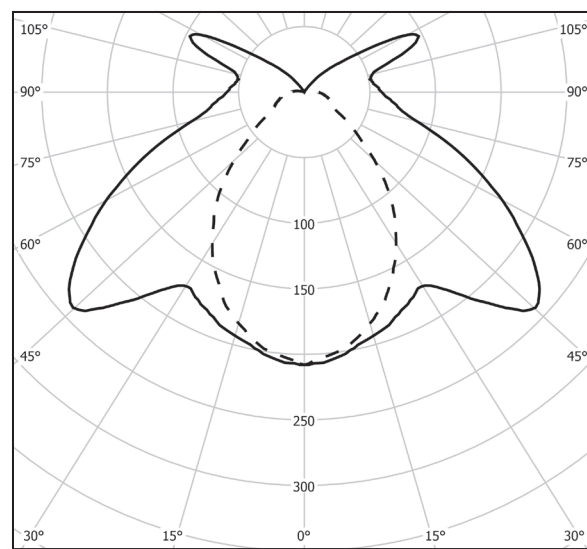
Warranty period - **5 years**

## TECHNICAL DATA

<b>Type of protection</b>	Certificate	EAC
	Protection degree	IP42
	Ambient temperature	-40°C ÷ +60°C
<b>Electrical data</b>	Supply voltage, VAC	140÷265
	Supply voltage, VDC	200÷370
	Frequency, Hz	50±10%
	Color temperature, K	W - 3000÷4000, N - 4000÷6000
	Durability, hours	100000
	Warranty, years	5
<b>Construction</b>	Housing	Polycarbonate glass with steel base covered with paint
	Diffuser	Polycarbonate glass
	Gasket	None
	Overall dimensions, mm	See <i>Model code</i> table
	Weight, kg	See <i>Model code</i> table
	Mounting	Wall

Model catalogue number	Luminous flux, lm	Power consumption, W	Overall dimensions (AxBxC), mm	Weight, kg
<b>Lyuks</b> (SSO-A-220-007-N/W-MCC1)	1950	17	385x156x70	2,5

## LIGHT DISTRIBUTION CURVE

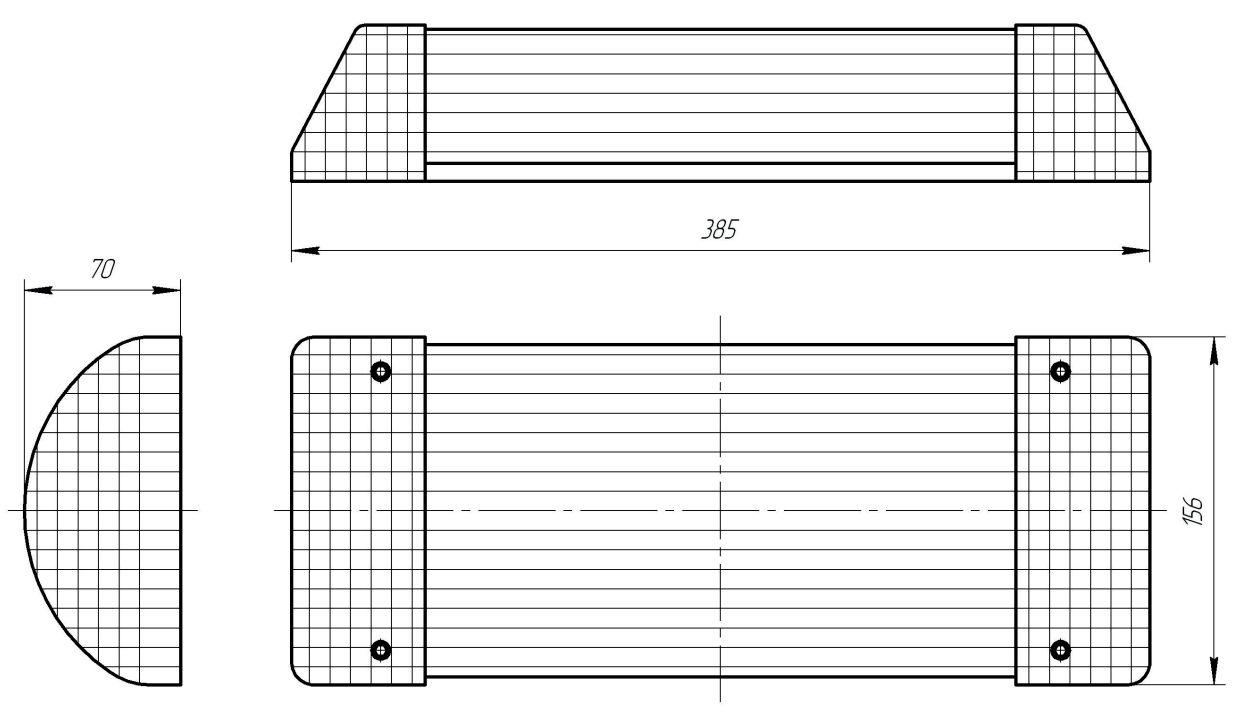


cd/klm  
 — C0 - C180    - - C90 - C270  
**A - cosine**

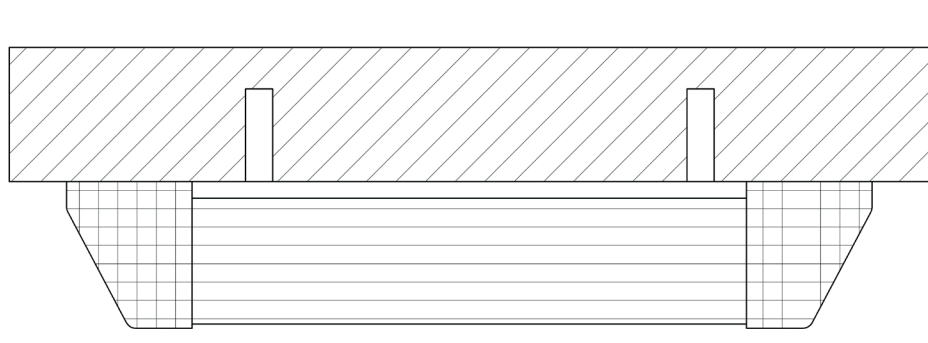


# INDOOR ILLUMINATION

## DIMENSION DRAWINGS



## MOUNTING





Prostor-3M

# INDOOR ILLUMINATION

## DESCRIPTION

Indoor illumination of **production facilities, public spaces**

**LED technology** with a high luminous efficiency with rated lumen-maintenance life  
**L70F10 (50000 hours) and L50F50 (100000 hours)**

**High lumen** output LED

**Reliable** housing

Warranty period – **5 years**

## TECHNICAL DATA

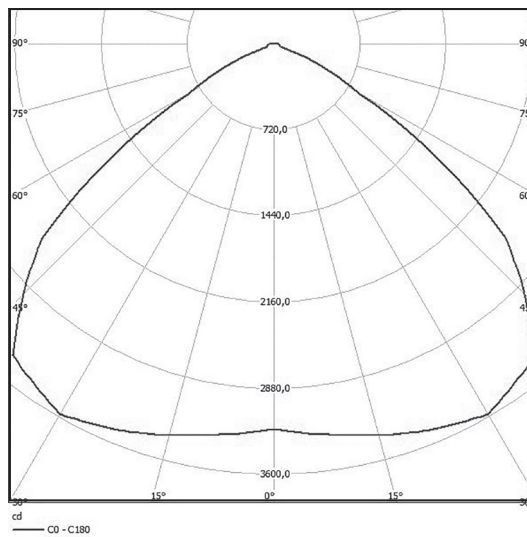
<b>Type of protection</b>	Certificate	EAC
	Protection degree	IP33
	Ambient temperature	-30°C÷+60°C
<b>Electrical data</b>	Supply voltage, VAC	140÷265
	Supply voltage, VDC	200÷370
	Frequency, Hz	50±10%
	Color temperature, K	W - 3000-4000, N - 4000-6000
	Durability, hours	100000
	Warranty, years	5
<b>Construction</b>	Housing	Anodized aluminum
	Gasket	Silicone
	Overall dimensions, mm	See <i>Model code</i> table
	Weight, kg	See <i>Model code</i> table
	Mounting	Pendant

# SERIES PROSTOR-3M

MODEL CODE

Model catalogue number	Luminous flux, lm	Power consumption, W	Overall dimensions (AxBxC), mm	Weight, kg
<b>Prostor-3M</b> (SSP-A-220-059-N/W-MCC2)	10000	87	Ø405x420	5,3

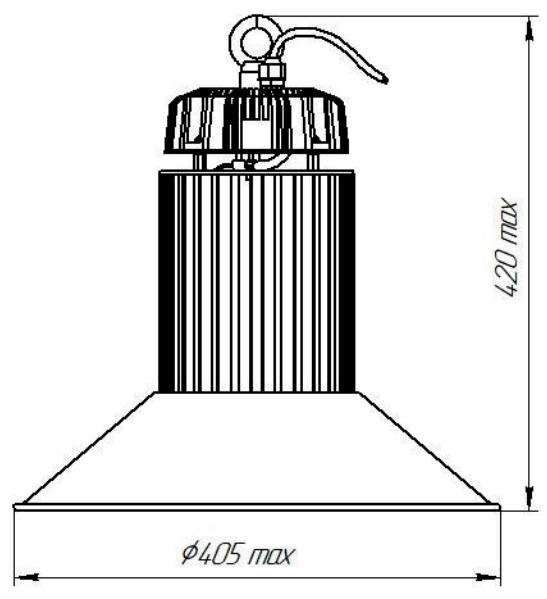
## LIGHT DISTRIBUTION CURVE



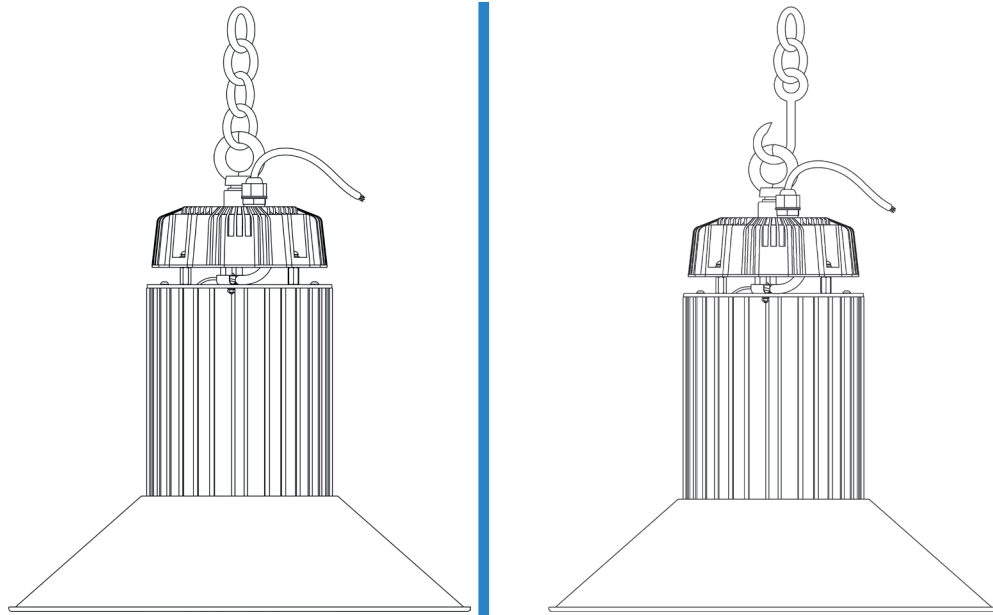
A - cosine

# INDOOR ILLUMINATION

## DIMENSION DRAWINGS



## MOUNTING









# EXPLOSION-PROOF ILLUMINATION







**SVS-220-001**



## DESCRIPTION

Outdoor and indoor illumination of **areas with potentially explosive atmosphere of gas, dust and vapor**

**LED technology** with a high luminous efficiency with rated lumen-maintenance life **L70F10 (50000 hours) and L50F50 (100000 hours)**

**Universally applicable** mounting, operates in any position

Suitable **for zones 1, 2, 21, 22**

Warranty period – **5 years**

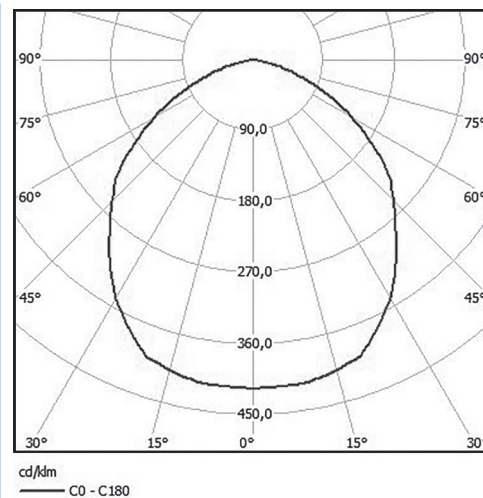
# EXPLOSION-PROOF ILLUMINATION

## TECHNICAL DATA

<b>Type of protection</b>	Marking of explosion protection	1Ex d op is IIC T5 Gb / Ex tb IIIC T100°C Db
	Apparatus category	II 2G II 2D
	Protection degree	IP65
	Ambient temperature	-50°C÷+50°C
	Electric shock protection class	I
<b>Electrical data</b>	Supply voltage, VAC	176÷264
	Supply voltage, VDC	250÷370
	Frequency, Hz	50±10%
	Color temperature, K	4000÷6000
	Connecting terminals	2 pairs H50001-LEG 0.5-6 mm <sup>2</sup> , 36A, 600V
	Cable entry	1xG3/4-A, Ex d, Ø6-12 mm
	Durability, hours	50000
	Warranty, years	5
<b>Construction</b>	Housing	Aluminum casting alloy
	Diffuser	Borosilicate glass
	Gasket	Silicone
	Overall dimensions, mm	See <i>Model code table</i>
	Weight, kg	See <i>Model code table</i>
	Mounting	Stanchion, pendant, wall, ceiling

Model catalogue number	Luminous flux, lm	Power consumption, W	Overall dimensions (AxBxC), mm	Weight, kg
SVS- 220-001-01	3000	45	270x265x250	7,5
SVS-220-001-02	2000	30	270x265x250	7,5
SVS-220-001-03	1300	20	270x265x250	7,5
SVS-220-001-04	6600	60	270x265x250	7,5

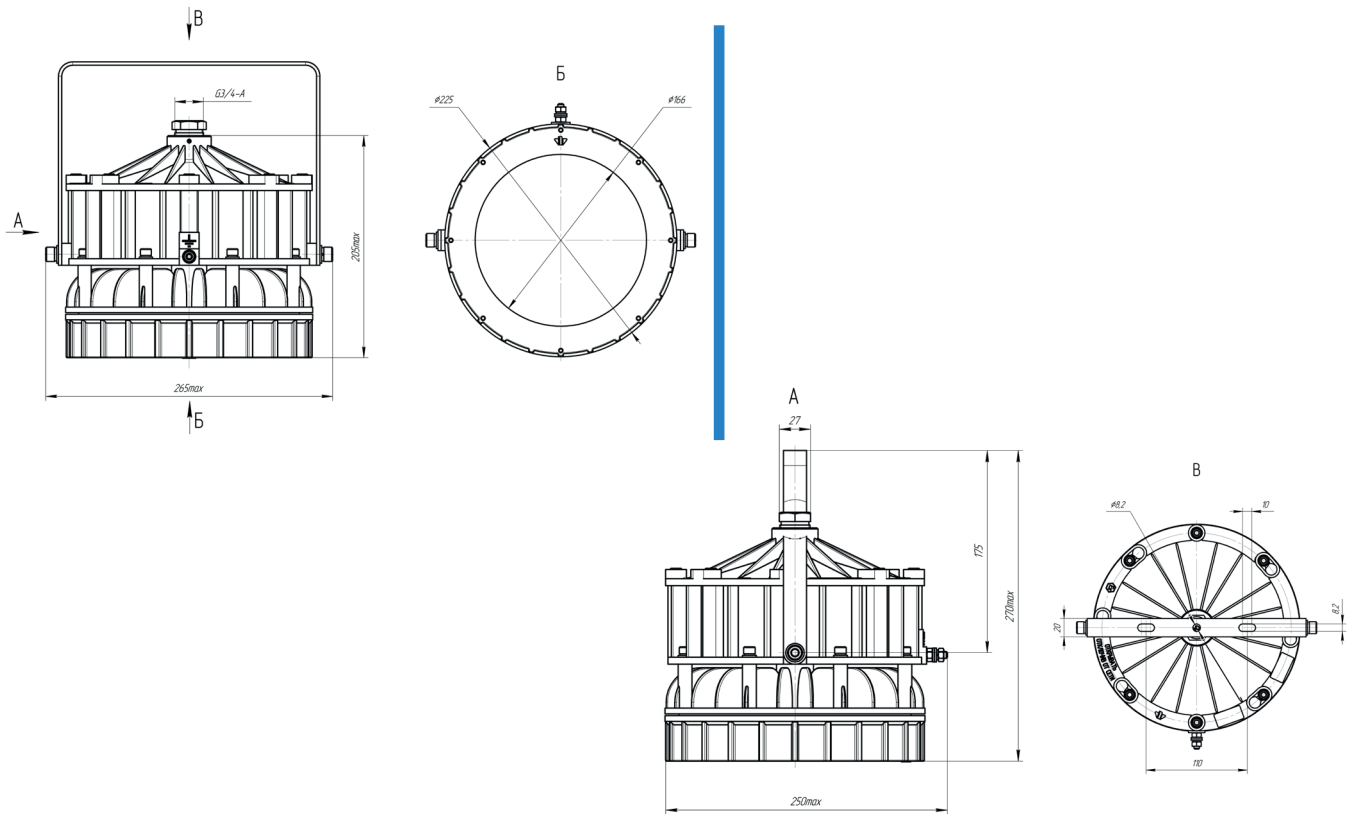
## LIGHT DISTRIBUTION CURVE



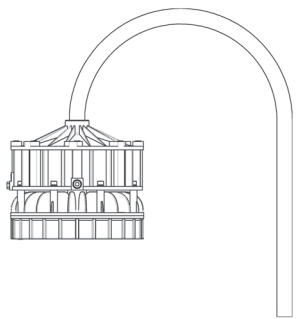
A - cosine

# EXPLOSION-PROOF ILLUMINATION

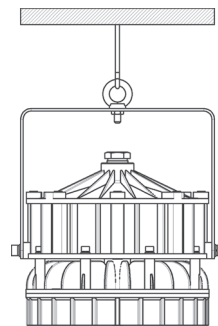
## DIMENSION DRAWINGS



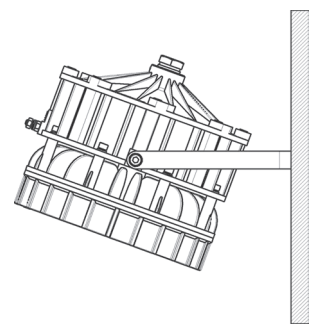
## MOUNTING



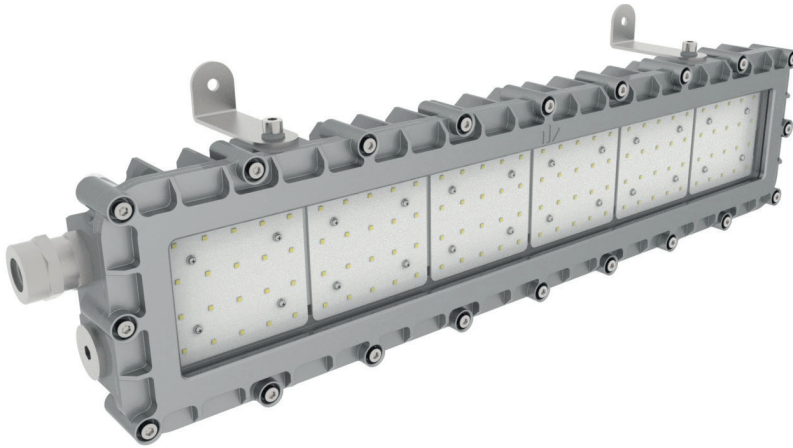
Stanchion mount



Pendant mount



Wall/ceiling mount



**SPV-220-001**

## DESCRIPTION

Outdoor illumination of **areas with potentially explosive atmosphere of gas, dust and vapor**

**LED technology** with a high luminous efficiency with rated lumen-maintenance life **L70F10 (50000 hours) and L50F50 (100000 hours)**

**Reliable** housing

Suitable **for zones 1, 2, 21, 22**

Warranty period – **5 years**

# EXPLOSION-PROOF ILLUMINATION

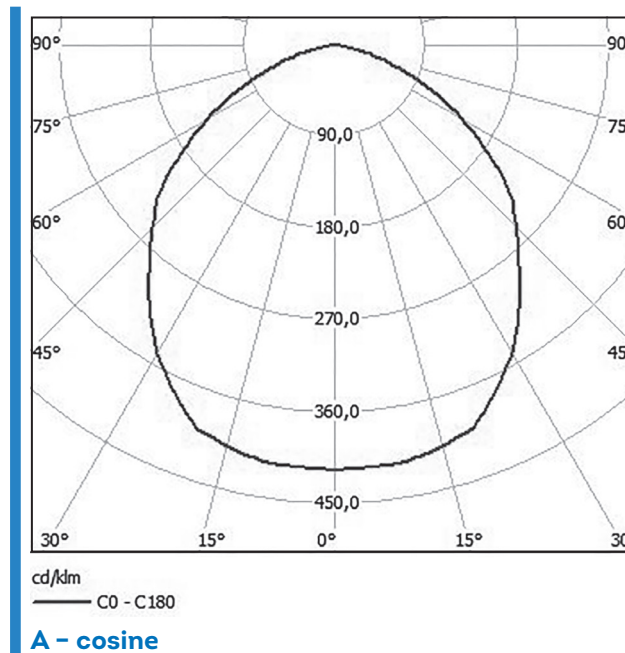
## TECHNICAL DATA

<b>Type of protection</b>	Marking of explosion protection	1 Ex de IIB+H2 T5 Gb / Ex tb IIIC T100°C D
	Apparatus category	II 2G II 2D
	Protection degree	IP65
	Ambient temperature	- 40°C++ 50°C
	Electric shock protection class	I
<b>Electrical data</b>	Supply voltage, VAC	176÷264
	Supply voltage, VDC	250÷370
	Frequency, Hz	50÷10%
	Color temperature, K	4000÷6000
	Connecting terminals	WAGO three-pole 862-1503, 0.5-4 mm <sup>2</sup> , 32A, 500V
	Cable entry	1xG3/4-A, Ex e, Ø6 mm
	Durability, hours	50000
	Warranty, years	5
<b>Construction</b>	Housing	Aluminum casting alloy
	Diffuser	Heat-strengthened glass
	Gasket	Silicone
	Overall dimensions, mm	See <i>Model code table</i>
	Weight, kg	See <i>Model code table</i>
	Mounting	Wall, ceiling



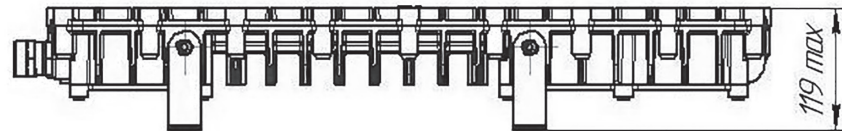
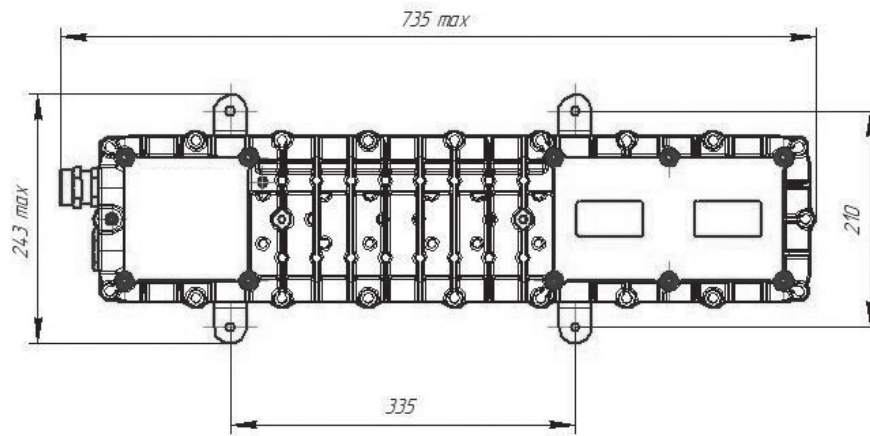
Model catalogue number	Luminous flux, lm	Power consumption, W	Overall dimensions (AxBxC), mm	Weight, kg
SPV-220-001-01	4400	40	735x243x119	11,0
SPV-220-001-02	6600	60	735x243x119	11,0

## LIGHT DISTRIBUTION CURVE

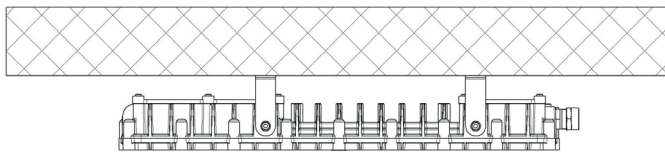


# EXPLOSION-PROOF ILLUMINATION

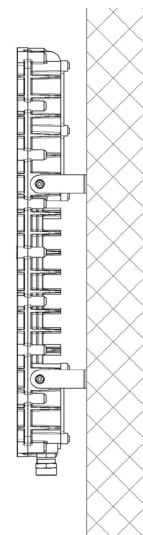
## DIMENSION DRAWINGS



## MOUNTING



Ceiling mount



Wall mount



**SPV-220-003**

## DESCRIPTION

Outdoor illumination of **areas with potentially explosive atmosphere of gas, dust and vapor**

**LED technology** with a high luminous efficiency with rated lumen-maintenance life **L70F10 (50000 hours) and L50F50 (100000 hours)**

**Reliable** housing

Suitable **for zones 1, 2, 21, 22**

Warranty period – **5 years**

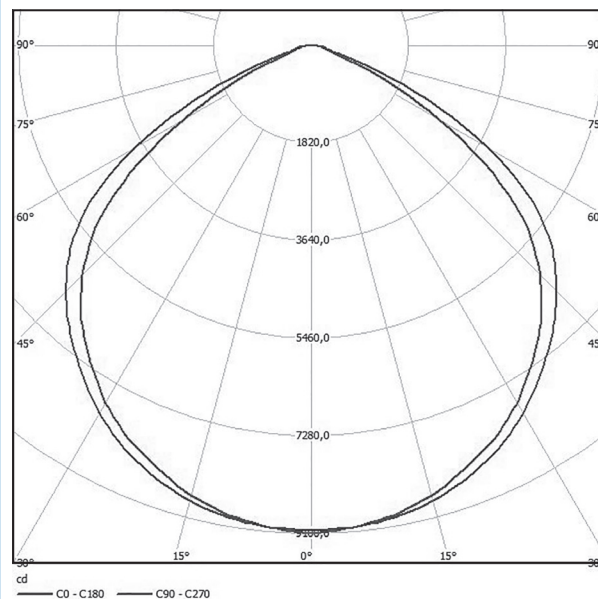
# EXPLOSION-PROOF ILLUMINATION

## TECHNICAL DATA

<b>Type of protection</b>	Marking of explosion protection	1 Ex de IIC T4 Gb /Ex tb IIIC T128°C Db
	Apparatus category	II 2G II 2D
	Protection degree	IP65
	Ambient temperature	- 40°C++ 50°C
	Electric shock protection class	I
<b>Electrical data</b>	Supply voltage, VAC	176÷264
	Supply voltage, VDC	250÷370
	Frequency, Hz	50÷10%
	Color temperature, K	4000÷6000
	Connecting terminals	WAGO three-pole 865-1503, 0.5-4 mm <sup>2</sup> , 32A, 500V
	Cable entry	KNB01MNK, 1xM16x1.5, Ex e, Ø3-8 mm
	Durability, hours	50000
	Warranty, years	5
<b>Construction</b>	Housing	Aluminum casting alloy
	Diffuser	Heat-strengthened glass
	Gasket	Silicone
	Overall dimensions, mm	See <i>Model code table</i>
	Weight, kg	See <i>Model code table</i>
	Mounting	Pendant, wall, ceiling

Model catalogue number	Luminous flux, lm	Power consumption, W	Overall dimensions (AxBxC), mm	Weight, kg
SPV-220-003-01	14000	100	410x255x115	13,0
SPV-220-003-02	16800	120	410x255x115	13,0
SPV-220-003-03	21000	150	410x255x115	13,0
SPV-220-003-04	23800	170	410x255x115	13,0

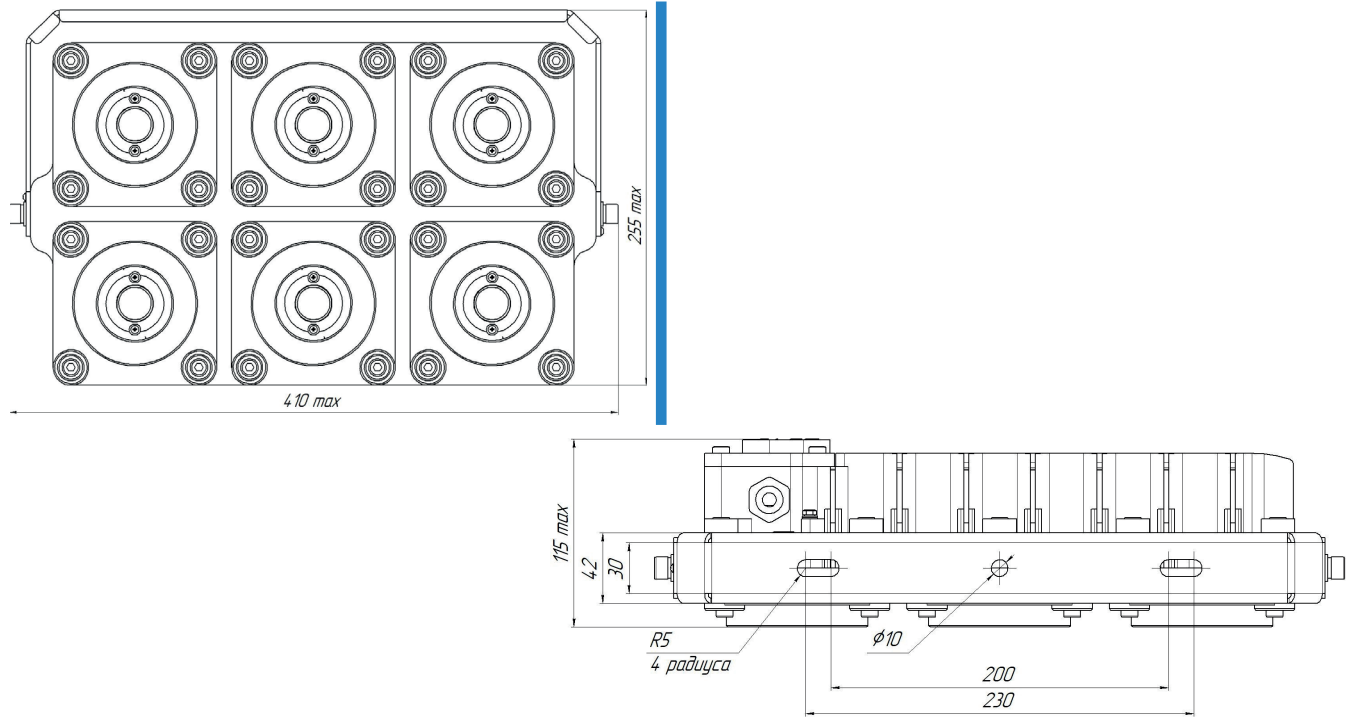
## LIGHT DISTRIBUTION CURVE



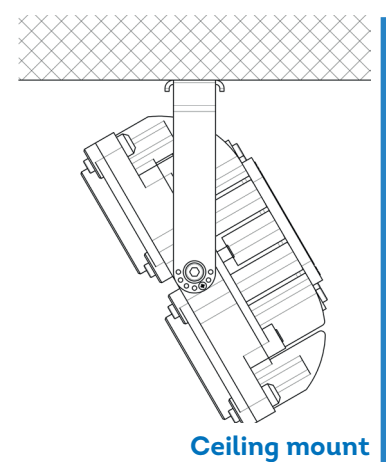
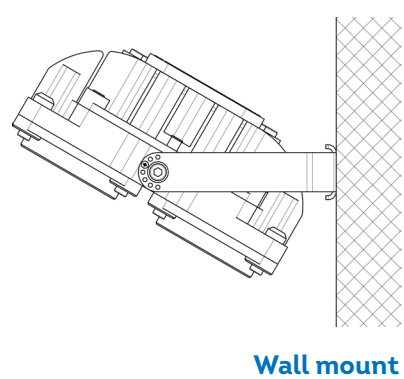
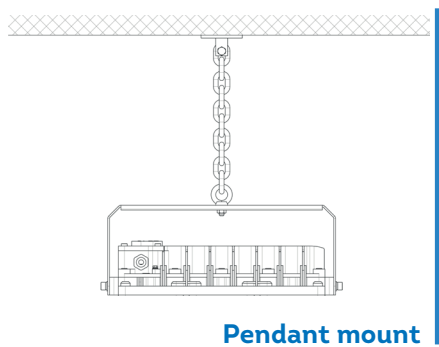
A - cosine

# EXPLOSION-PROOF ILLUMINATION

## DIMENSION DRAWINGS



## MOUNTING





**SPV-220-005**

## DESCRIPTION

Outdoor and indoor illumination of **areas with potentially explosive atmosphere of gas, dust and vapor**

**LED technology** with a high luminous efficiency with rated lumen-maintenance life **L70F10 (50000 hours) and L50F50 (100000 hours)**

**Reliable** housing

Suitable **for zones 1, 2, 21, 22**

Warranty period – **5 years**



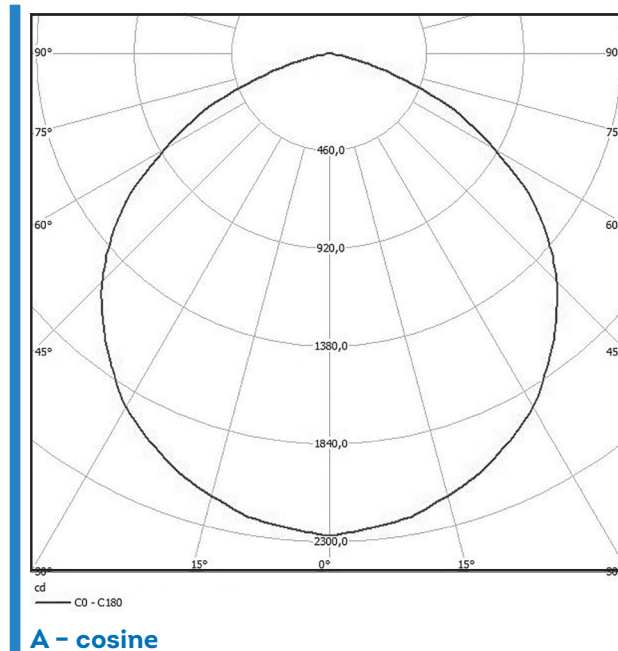
# EXPLOSION-PROOF ILLUMINATION

## TECHNICAL DATA

<b>Type of protection</b>	Marking of explosion protection	1Ex d e IIC T5 Gb / Ex tb IIIC T95°C Db
	Apparatus category	II 2G II 2D
	Protection degree	IP65
	Ambient temperature	- 40°C++ 50°C
	Electric shock protection class	I
<b>Electrical data</b>	Supply voltage, VAC	176÷264
	Supply voltage, VDC	250÷370
	Frequency, Hz	50÷10%
	Color temperature, K	4000÷6000
	Connecting terminals	2 pairs H50001-LEG 0.5-6 mm <sup>2</sup> , 36A, 600V
	Cable entry	1xG3/4-A, Ex d, Ø6 mm
	Durability, hours	50000
	Warranty, years	5
<b>Construction</b>	Housing	Aluminum casting alloy
	Diffuser	Heat-strengthened glass
	Gasket	Silicone
	Overall dimensions, mm	See <i>Model code table</i>
	Weight, kg	See <i>Model code table</i>
	Mounting	Stanchion, pendant, wall, ceiling, surface

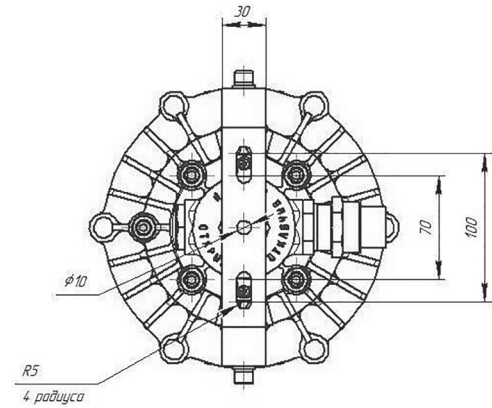
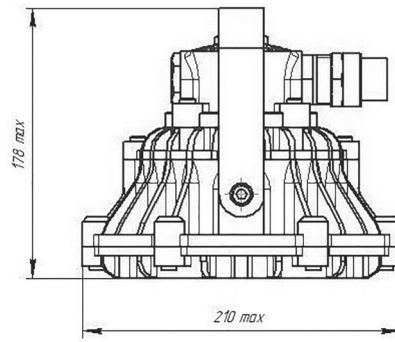
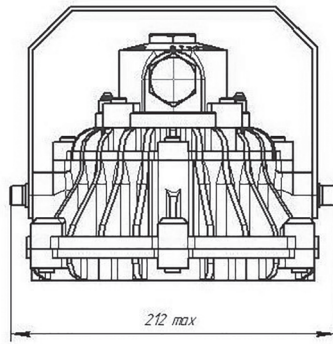
Model catalogue number	Luminous flux, lm	Power consumption, W	Overall dimensions (AxBxC), mm	Weight, kg
SPV-220-005-01	2800	20	212x210x178	4,5
SPV-220-005-02	4200	30	212x210x178	4,5
SPV-220-005-03	5600	40	212x210x178	4,5
SPV-220-005-04	8400	60	212x210x178	4,5

## LIGHT DISTRIBUTION CURVE

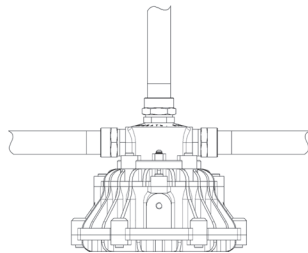


# EXPLOSION-PROOF ILLUMINATION

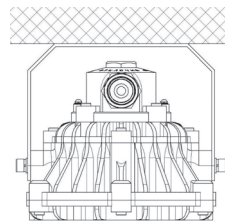
## DIMENSION DRAWINGS



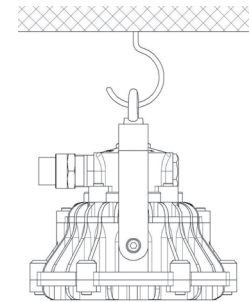
## MOUNTING



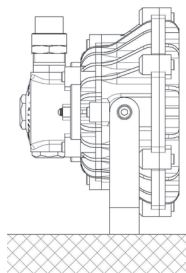
**Stanchion mount**



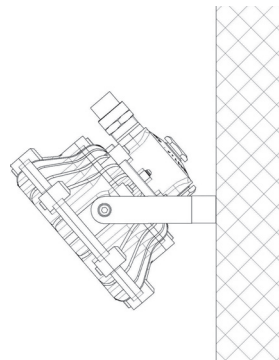
**Ceiling mount**



**Pendant mount**



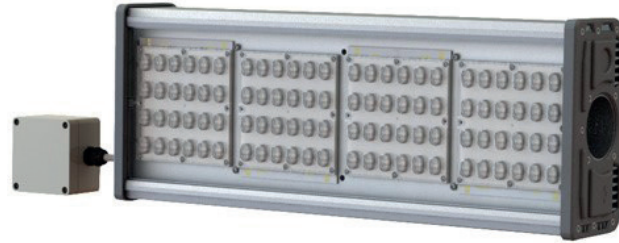
**Surface mount**



**Wall mount**



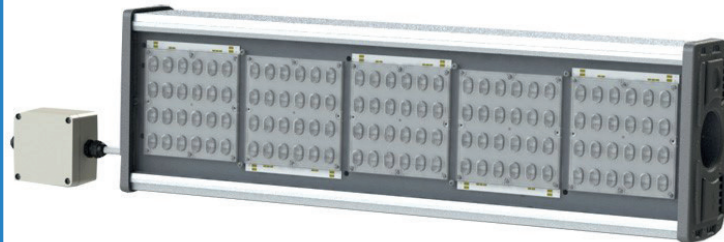
**Trassa-1-EX**



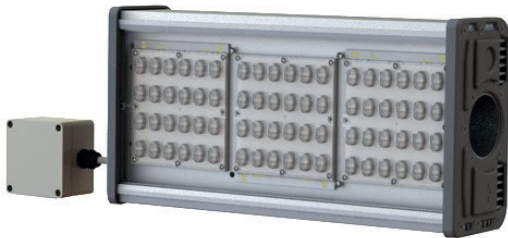
**Trassa-4-EX**



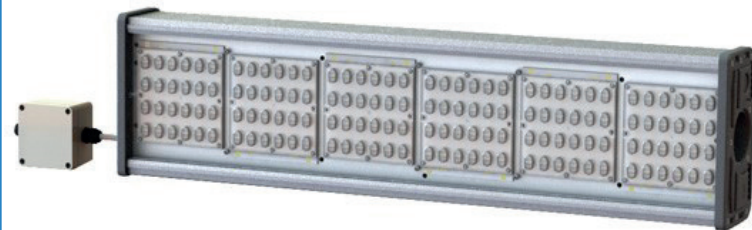
**Trassa-2-EX**



**Trassa-5-EX**



**Trassa-3-EX**



**Trassa-6-EX**

# EXPLOSION-PROOF ILLUMINATION

## DESCRIPTION

Outdoor and indoor illumination of **areas with potentially explosive atmosphere of gas, dust and vapor**

**LED technology** with a high luminous efficiency with rated lumen-maintenance life  
**L70F10 (50000 hours) and L50F50 (100000 hours)**

Light distribution curve according to **the customer's choice**

Suitable **for zones 2, 22**

Warranty period - **5 years**

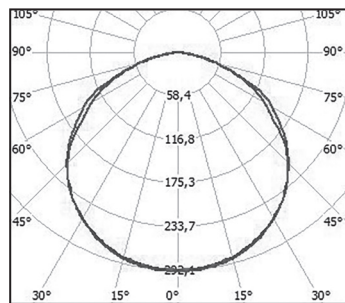
## TECHNICAL DATA

<b>Type of protection</b>	Marking of explosion protection	Ex nR II T4 Gc / DIP A21 TA (110...135) °C
	Apparatus category	II 3G II 3D
	Protection degree	IP67
	Ambient temperature	- 40°C÷+ 60°C
	Electric shock protection class	I
<b>Electrical data</b>	Supply voltage, VAC	140÷265
	Supply voltage, VDC	200÷370
	Frequency, Hz	50±10%
	Color temperature, K	W - 3000÷4000, N - 4000÷6000
	Durability, hours	100000
	Warranty, years	5
<b>Construction</b>	Housing	Anodized aluminum profile with plastic end covers
	Diffuser	Polycarbonate
	Gasket	Silicone
	Overall dimensions, mm	See <i>Model code</i> table
	Weight, kg	See <i>Model code</i> table
	Mounting	Stanchion, wall, ceiling

Model catalogue number	Luminous flux, lm	Power consumption, W	Overall dimensions (AxBxC), mm	Weight, kg
<b>Outdoor illumination</b>				
<b>Trassa-1-Ex</b> (SKS-A/B/C-220-001-N/W-MCC1-Ex)	3600	30	395x209x105	3,4
<b>Trassa-2-Ex</b> (SKS-A/B/C-220-002-N/W-MCC1-Ex)	7200	60	495x209x105	5,7
<b>Trassa-3-Ex</b> (SKS-A/B/C-220-003-N/W-MCC1-Ex)	10800	90	605x209x105	7,7
<b>Trassa-4-Ex</b> (SKS-A/B/C-220-004-N/W-MCC1-Ex)	14400	120	730x209x105	9,9
<b>Trassa-5-Ex</b> (SKS-A/B/C-220-005-N/W-MCC1-Ex)	18000	150	870x209x105	11,5
<b>Trassa-6-Ex</b> (SKS-A/B/C-220-006-N/W-MCC1-Ex)	21600	180	990x209x105	13,4
<b>Indoor illumination</b>				
<b>Trassa-1-Ex</b> (SKS-A/B/C-220-001-01-N/W-MCC1-Ex)	3600	30	395x209x245	3,8
<b>Trassa-2-Ex</b> (SKS-A/B/C-220-002-01-N/W-MCC1-Ex)	7200	60	495x209x245	6,1
<b>Trassa-3-Ex</b> (SKS-A/B/C-220-003-01-N/W-MCC1-Ex)	10800	90	605x209x245	8,1
<b>Trassa-4-Ex</b> (SKS-A/B/C-220-004-01-N/W-MCC1-Ex)	14400	120	730x209x245	10,7
<b>Trassa-5-Ex</b> (SKS-A/B/C-220-005-01-N/W-MCC1-Ex)	18000	150	870x209x245	12,3
<b>Trassa-6-Ex</b> (SKS-A/B/C-220-006-01-N/W-MCC1-Ex)	21600	180	990x209x245	14,2

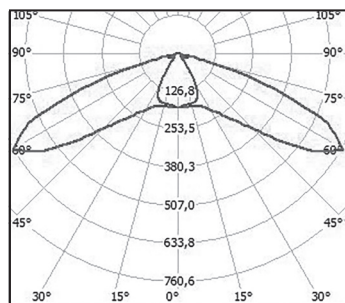
# EXPLOSION-PROOF ILLUMINATION

## LIGHT DISTRIBUTION CURVE



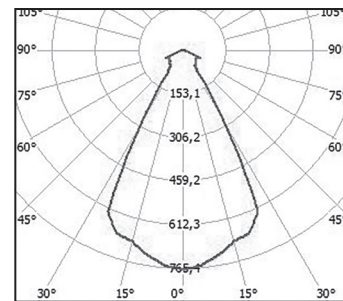
cd/dm  
— C0 - C180 — C90 - C270

**A - cosine**



cd/dm  
— C0 - C180 — C90 - C270

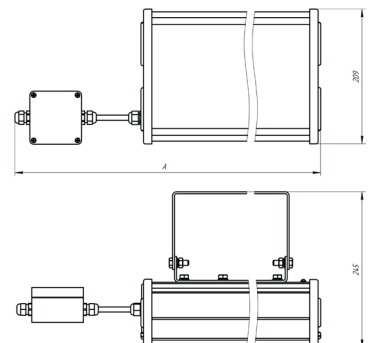
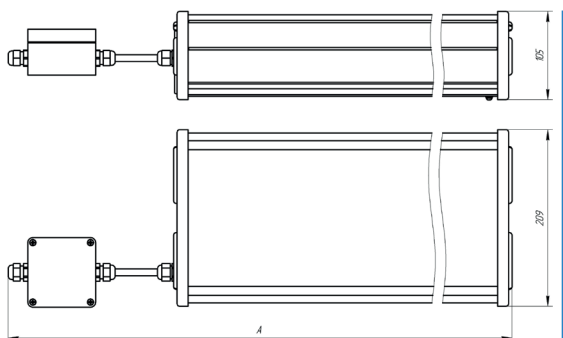
**B - wide**



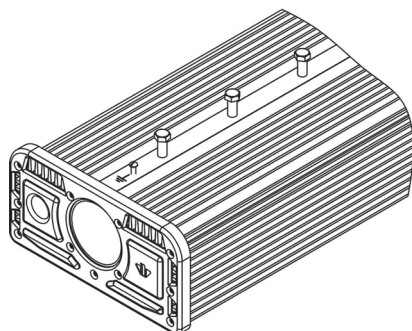
cd/dm  
— C0 - C180

**C - deep**

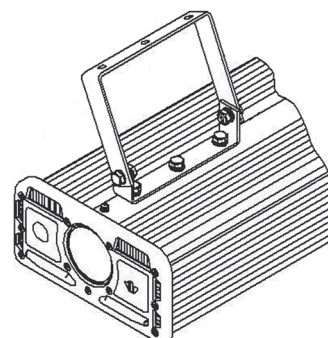
## DIMENSION DRAWINGS



## MOUNTING

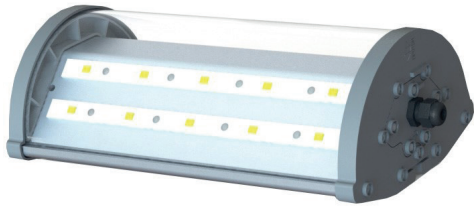


**Stanchion mount**



**Wall/ceiling mount**





Spektr-30-Ex



Spektr-50-Ex



Spektr-70-Ex



Spektr-100-Ex

# EXPLOSION-PROOF ILLUMINATION

## DESCRIPTION

Outdoor illumination of **areas with potentially explosive atmosphere of gas, dust and vapor**

**LED technology** with a high luminous efficiency with rated lumen-maintenance life  
**L70F10 (50000 hours) and L50F50 (100000 hours)**

**Low maintenance**

Suitable **for zones 2, 22**

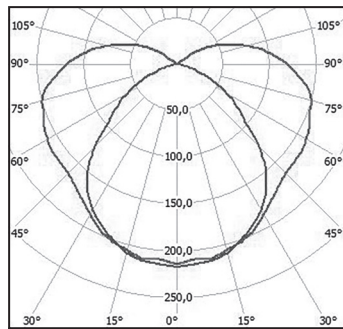
Warranty period - **5 years**

## TECHNICAL DATA

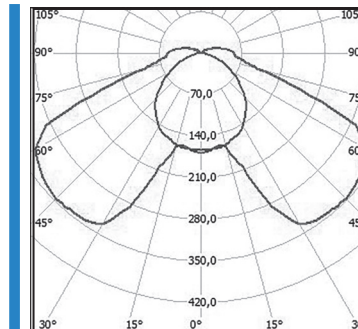
<b>Type of protection</b>	Marking of explosion protection	Ex nR II T4 Gc / DIP A21 TA (110...135) °C
	Apparatus category	II 3G II 3D
	Protection degree	IP65
	Ambient temperature	- 40°C÷+ 60°C
	Electric shock protection class	I
<b>Electrical data</b>	Supply voltage, VAC	140÷265
	Supply voltage, VDC	200÷370
	Frequency, Hz	50±10%
	Color temperature, K	W - 3000÷4000, N - 4000÷6000
	Durability, hours	100000
	Warranty, years	5
<b>Construction</b>	Housing	Anodized aluminum profile with plastic end covers
	Diffuser	Polycarbonate glass
	Gasket	Silicone
	Overall dimensions, mm	See <i>Model code</i> table
	Weight, kg	See <i>Model code</i> table
	Mounting	Stanchion

Model catalogue number	Luminous flux, lm	Power consumption, W	Overall dimensions (AxBxC), mm	Weight, kg
<b>Spektr-30-Ex</b> (SSO-A-220-003-N/W-MCC1-Ex)	3250	26	310x180x107	3,0
<b>Spektr-50-Ex</b> (SSO-B-220-004-N/W-MCC1-Ex)	7440	62	635x180x107	5,5
<b>Spektr-70-Ex</b> (SSO-A-220-010-N/W-MCC1-Ex)	11250	90	715x180x107	6,0
<b>Spektr-100-Ex</b> (SSO-B-220-005-N/W-MCC1-Ex)	15620	125	1228x180x107	10,0

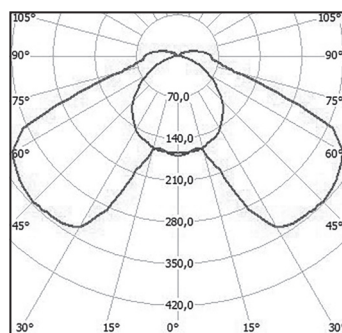
## LIGHT DISTRIBUTION CURVE



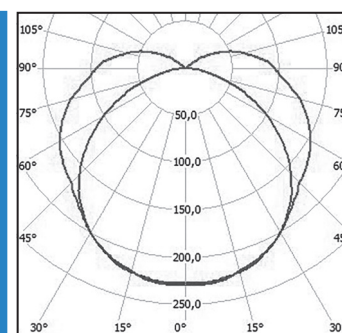
**A - cosine** Spektr-30-Ex



**B - wide** Spektr-50-Ex



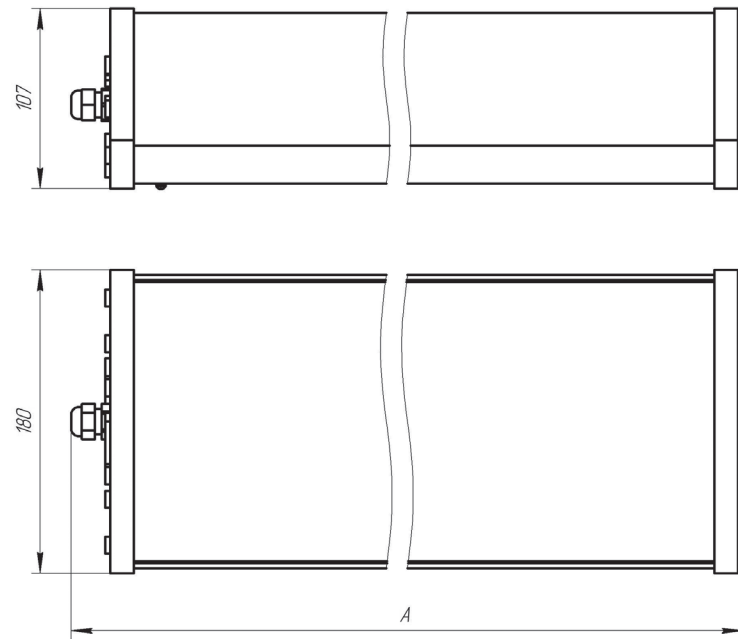
**A - cosine** Spektr-70-Ex



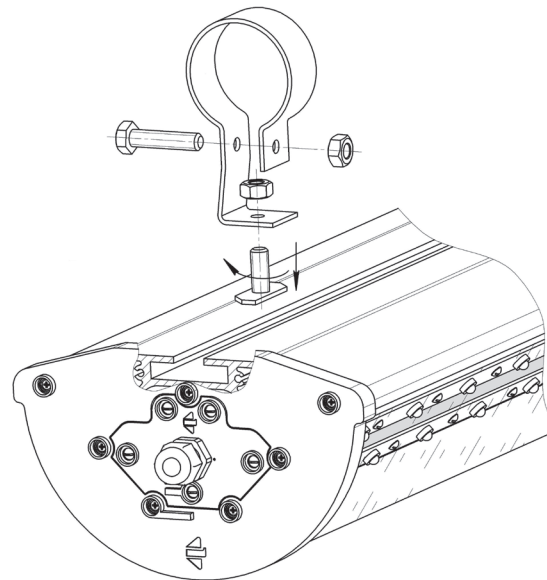
**B - wide** Spektr-100-Ex

# EXPLOSION-PROOF ILLUMINATION

## DIMENSION DRAWINGS



## MOUNTING





**Spektr-30A-Ex**



**Spektr-50A-Ex**



**Spektr-70A-Ex**



**Spektr-100A-Ex**

# EXPLOSION-PROOF ILLUMINATION

## DESCRIPTION

Indoor illumination of **areas with potentially explosive atmosphere of gas, dust and vapor**

**LED technology** with a high luminous efficiency with rated lumen-maintenance life  
**L70F10 (50000 hours) and L50F50 (100000 hours)**

**Low maintenance**

Suitable **for zones 2, 22**

Warranty period - **5 years**

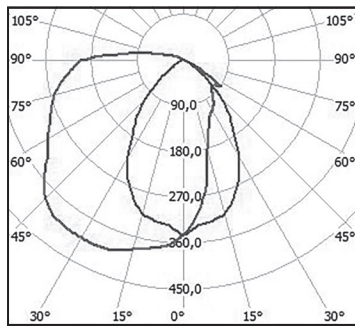
## TECHNICAL DATA

<b>Type of protection</b>	Marking of explosion protection	Ex nR II T4 Gc / DIP A21 TA (110...135) °C
	Apparatus category	II 3G II 3D
	Protection degree	IP65
	Ambient temperature	- 40°C÷+ 60°C
	Electric shock protection class	I
<b>Electrical data</b>	Supply voltage, VAC	140÷265
	Supply voltage, VDC	200÷370
	Frequency, Hz	50±10%
	Color temperature, K	W - 3000÷4000, N - 4000÷6000
	Durability, hours	100000
	Warranty, years	5
<b>Construction</b>	Housing	Anodized aluminum profile with plastic end covers
	Diffuser	Polycarbonate glass
	Gasket	Silicone
	Overall dimensions, mm	See <i>Model code</i> table
	Weight, kg	See <i>Model code</i> table
	Mounting	Wall, ceiling

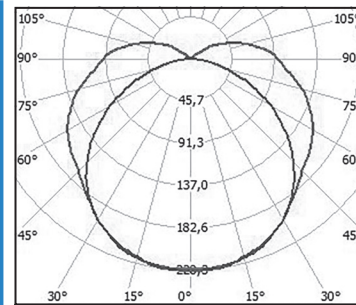


Model catalogue number	Luminous flux, lm	Power consumption, W	Overall dimensions (AxBxC), mm	Weight, kg
<b>Spektr-30A-Ex</b> (SSO-A-220-003-01-N/W-MCC1-Ex)	3250	26	310x180x107	3,0
<b>Spektr-50A-Ex</b> (SSO-A-220-004-01-N/W-MCC1-Ex)	7750	62	635x180x107	5,5
<b>Spektr-70A-Ex</b> (SSO-A-220-010-01-N/W-MCC1-Ex)	11250	90	715x180x107	6,0
<b>Spektr-100A-Ex</b> (SSO-A-220-005-01-N/W-MCC1-Ex)	15620	125	1228x180x107	10,0

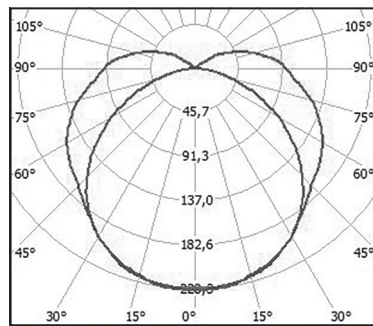
## LIGHT DISTRIBUTION CURVE



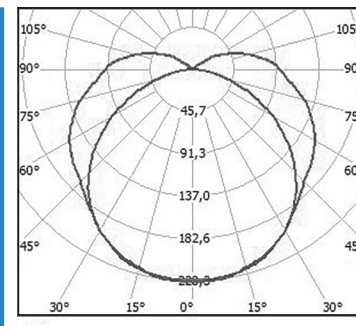
**A - cosine** Spektr-30A-Ex



**A - cosine** Spektr-50A-Ex



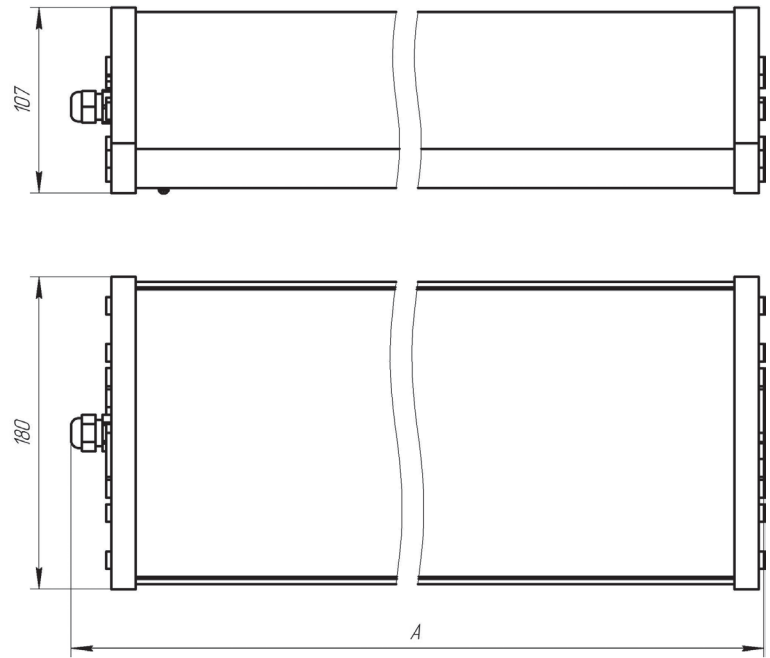
**A - cosine** Spektr-70A-Ex



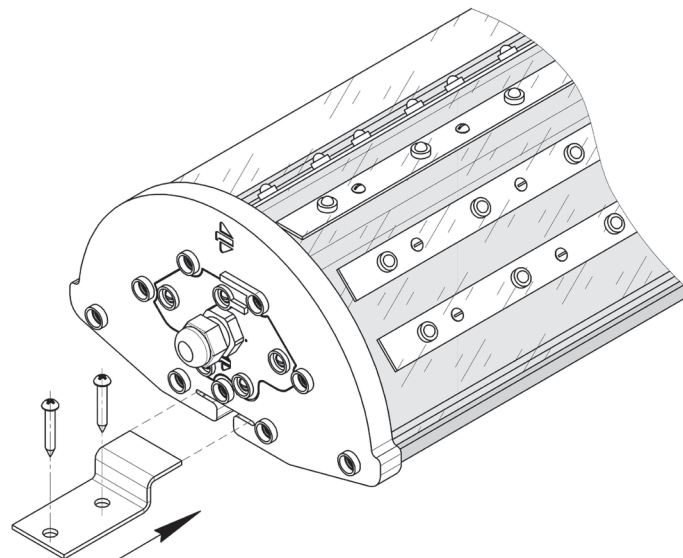
**A - cosine** Spektr-100A-Ex

# EXPLOSION-PROOF ILLUMINATION

## DIMENSION DRAWINGS



## MOUNTING





Spektr-30AVS



Spektr-50AVS

# EXPLOSION-PROOF ILLUMINATION

## DESCRIPTION

Indoor illumination of **areas with potentially explosive atmosphere of gas, dust and vapor**

**LED technology** with a high luminous efficiency with rated lumen-maintenance life  
**L70F10 (50000 hours) and L50F50 (100000 hours)**

Electric shock **protection II**

Suitable **for zones 2, 22**

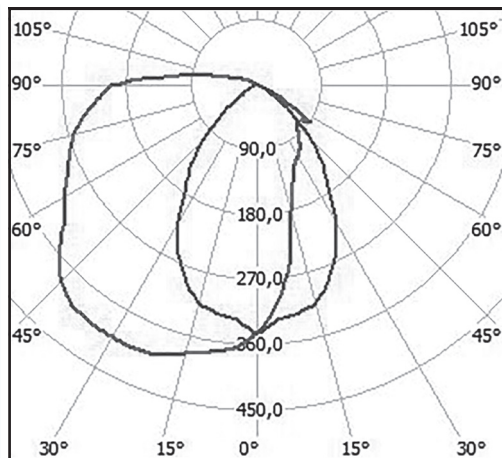
Warranty period - **5 years**

## TECHNICAL DATA

<b>Type of protection</b>	Marking of explosion protection	Ex nR II T4 Gc / DIP A21 TA (110...135) °C
	Apparatus category	II 3G II 3D
	Protection degree	IP65
	Ambient temperature	- 40°C÷+ 60°C
	Electric shock protection class	II
<b>Electrical data</b>	Supply voltage, VAC	140÷265
	Supply voltage, VDC	200÷370
	Frequency, Hz	50±10%
	Color temperature, K	W - 3000÷4000, N - 4000÷6000
	Durability, hours	100000
	Warranty, years	5
<b>Construction</b>	Housing	Anodized aluminum profile with plastic end covers
	Diffuser	Polycarbonate glass
	Gasket	Silicone
	Overall dimensions, mm	See <i>Model code</i> table
	Weight, kg	See <i>Model code</i> table
	Mounting	Wall, ceiling

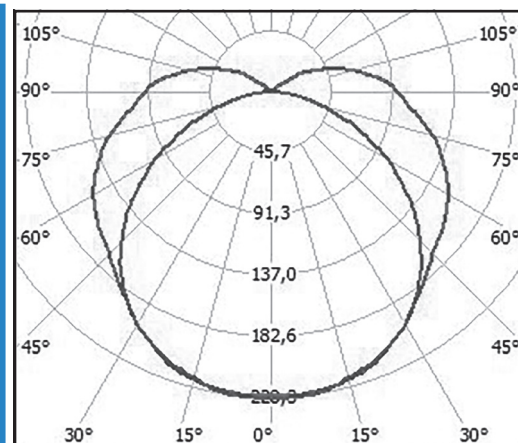
Model catalogue number	Luminous flux, lm	Power consumption, W	Overall dimensions (AxBxC), mm	Weight, kg
<b>Spektr-30AVS</b> (SSO-A-220-003-06-N/W-MCC1-Ex)	3250	26	410x180x107	3,5
<b>Spektr-50AVS</b> (SSO-A-220-004-06-N/W-MCC1-Ex)	7750	62	715x180x107	6,0

## LIGHT DISTRIBUTION CURVE



cd/km  
 — C0 - C180    - - - C90 - C270

**A - cosine**  
 Spektr-30AVS

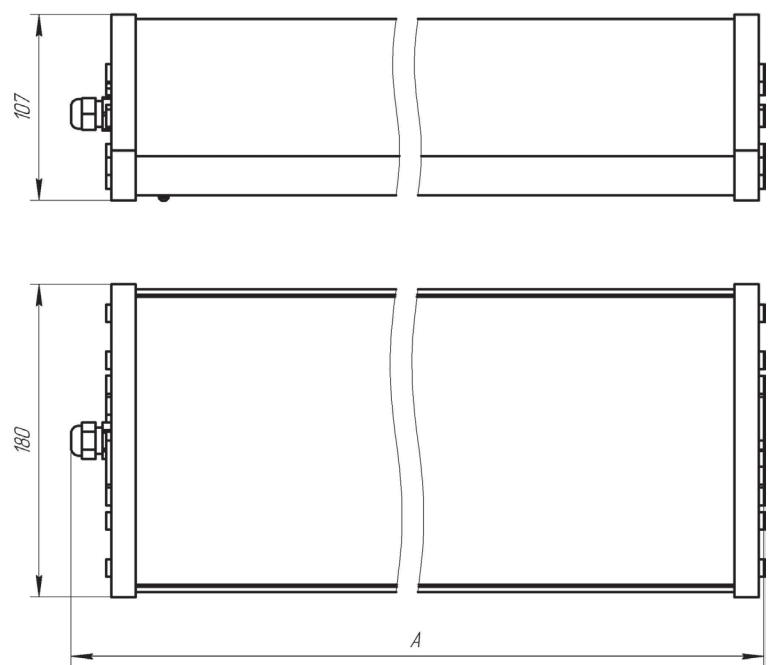


cd/km  
 — C0 - C180    - - - C90 - C270

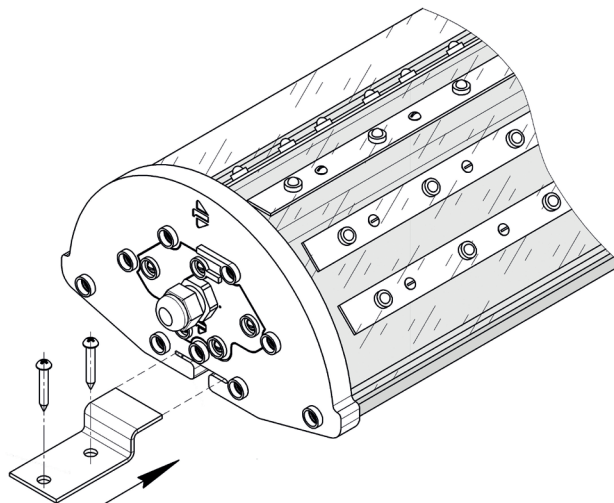
**A - cosine**  
 Spektr-50AVS

# EXPLOSION-PROOF ILLUMINATION

## DIMENSION DRAWINGS



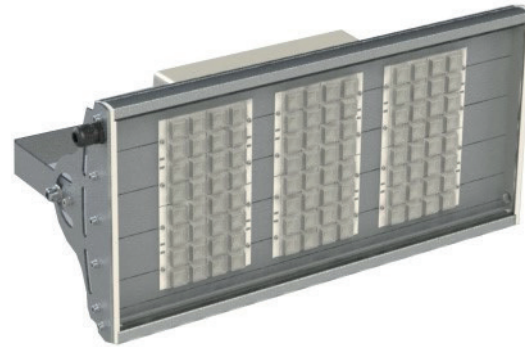
## MOUNTING







**Lyumen-4-Ex**



**Lyumen-4M-Ex**



**Lyumen-5-Ex**



**Lyumen-5M-Ex**

# EXPLOSION-PROOF ILLUMINATION

## DESCRIPTION

Indoor illumination of **areas with potentially explosive atmosphere of gas, dust and vapor**

**LED technology** with a high luminous efficiency with rated lumen-maintenance life  
**L70F10 (50000 hours) and L50F50 (100000 hours)**

**High lumen** output LED

Suitable **for zones 2, 22**

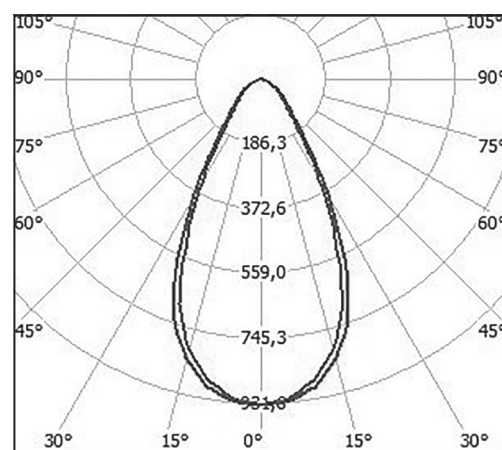
Warranty period – **5 years**

## TECHNICAL DATA

<b>Type of protection</b>	Marking of explosion protection	Ex nR IIC T4 Gc X / DIP A22 TA (110...135) °C
	Apparatus category	II 3G II 3D
	Protection degree	IP54
	Ambient temperature	See <i>Model code</i> table
	Electric shock protection class	I
<b>Electrical data</b>	Supply voltage, VAC	140÷265
	Supply voltage, VDC	200÷370
	Frequency, Hz	50±10%
	Color temperature, K	W - 3000÷4000, N - 4000÷6000
	Durability, hours	100000
	Warranty, years	5
<b>Construction</b>	Housing	Anodized aluminum profile with plastic end covers
	Diffuser	Heat-strengthened glass
	Gasket	Silicone
	Overall dimensions, mm	See <i>Model code</i> table
	Weight, kg	See <i>Model code</i> table
	Mounting	Wall, ceiling

Model catalogue number	Luminous flux, lm	Power consumption, W	Ambient temperature	Overall dimensions (AxBxC), mm	Weight, kg
<b>Lyumen-4-Ex</b> (SPS-C-220-036-N/W-MCC1-Ex)	26500	240	-10÷+60	645x285x245	12,0
<b>Lyumen-4M-Ex</b> (SPS-C-220-037-N/W-MCC1-Ex)	26500	240	-10÷+70	645x285x245	13,0
<b>Lyumen-5-Ex</b> (SPS-C-220-038-N/W-MCC1-Ex)	23000	210	-10÷+60	645x285x245	12,0
<b>Lyumen-5M-Ex</b> (SPS-C-220-039-N/W-MCC1-Ex)	23000	210	-10÷+70	645x285x245	14,0

## LIGHT DISTRIBUTION CURVE

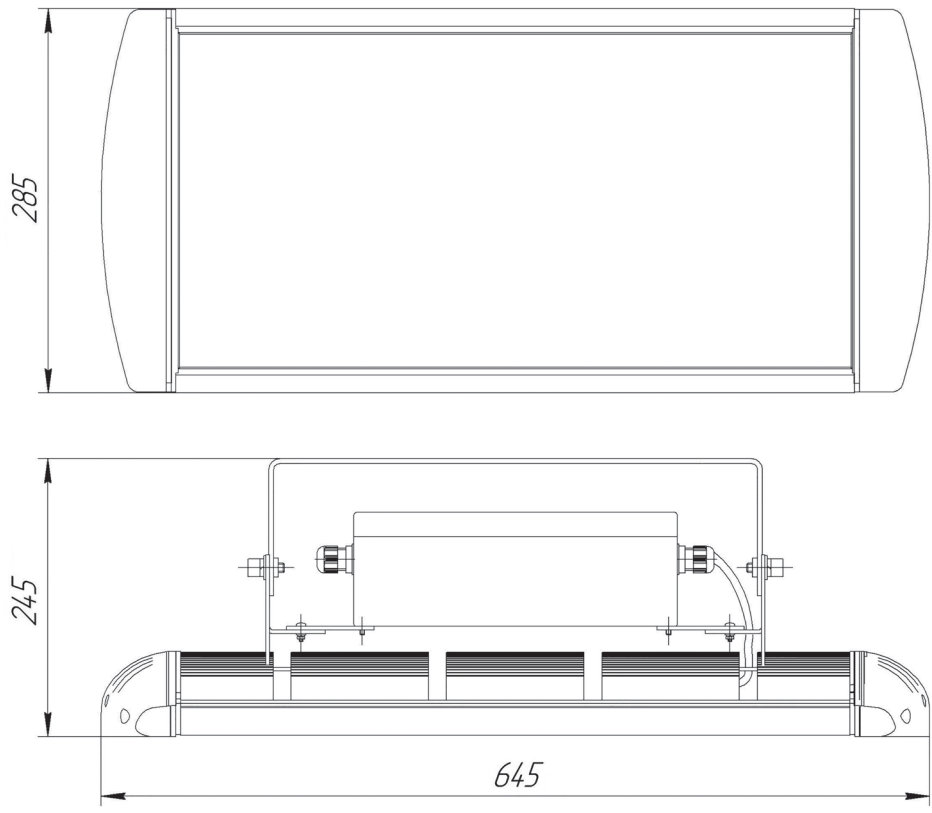


cd/km  
 — C0 - C180    - - - C90 - C270

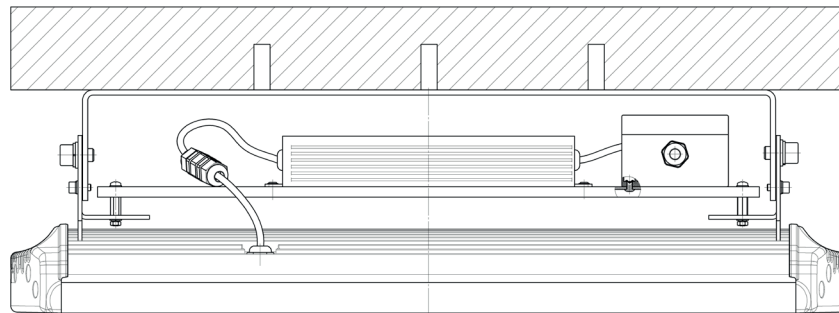
**C - deep**

# EXPLOSION-PROOF ILLUMINATION

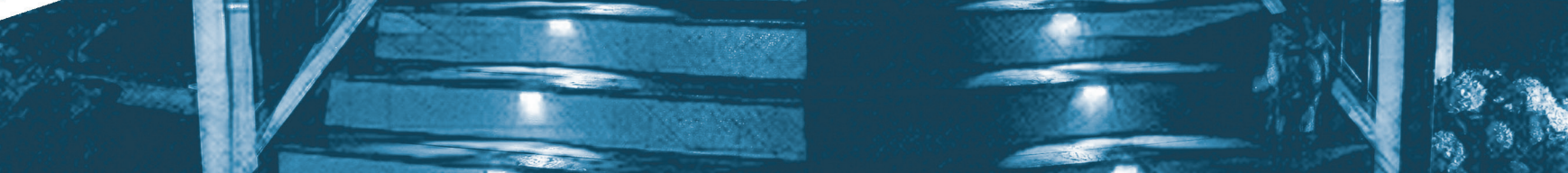
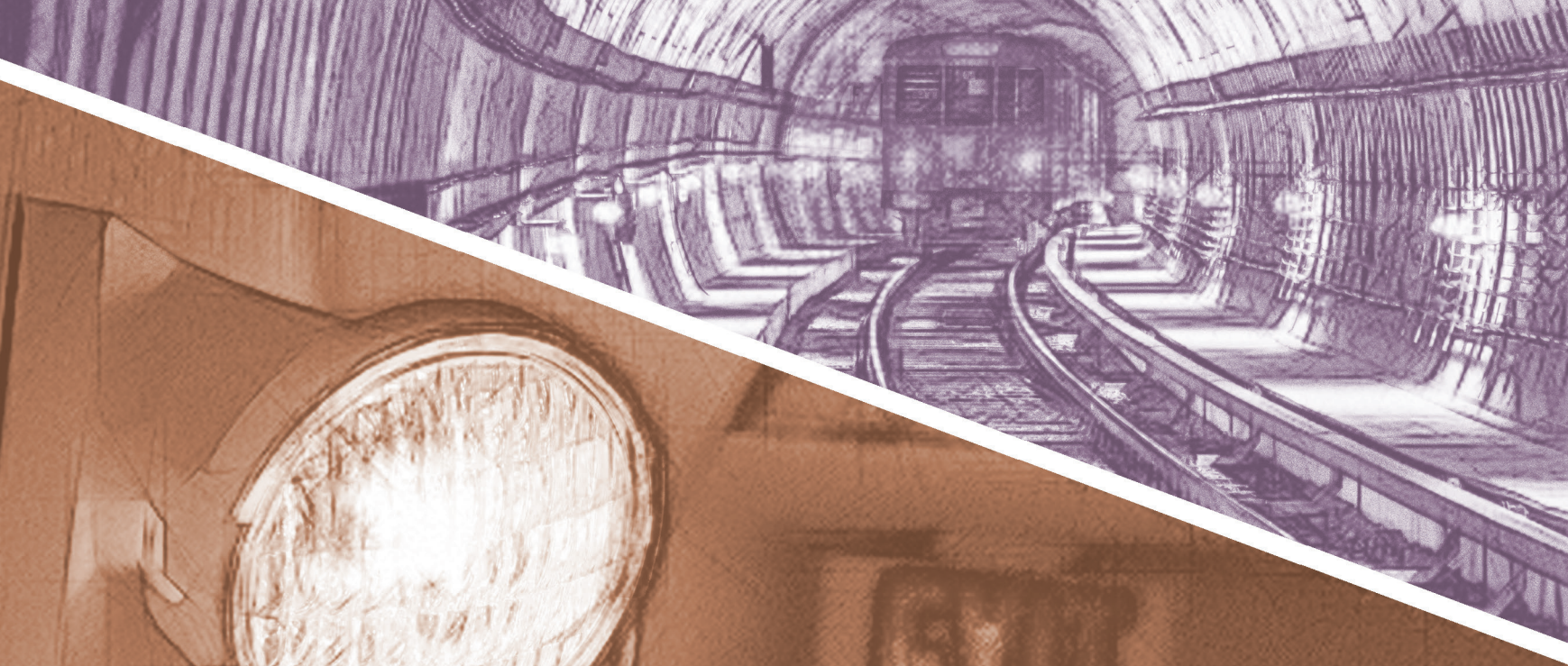
## DIMENSION DRAWINGS



## MOUNTING









**EMERGENCY**

**ILLUMINATION**







**Spektr-50A-BA**

# EMERGENCY ILLUMINATION

## DESCRIPTION

Indoor illumination of  
**hangars, halls, public spaces, production facilities, entries,  
 utility rooms for work in both standard operating and emergency modes**

**LED technology** with a high luminous efficiency with rated lumen-maintenance life  
**L70F10 (50000 hours) and L50F50 (100000 hours)**

**Aesthetically designed** housing

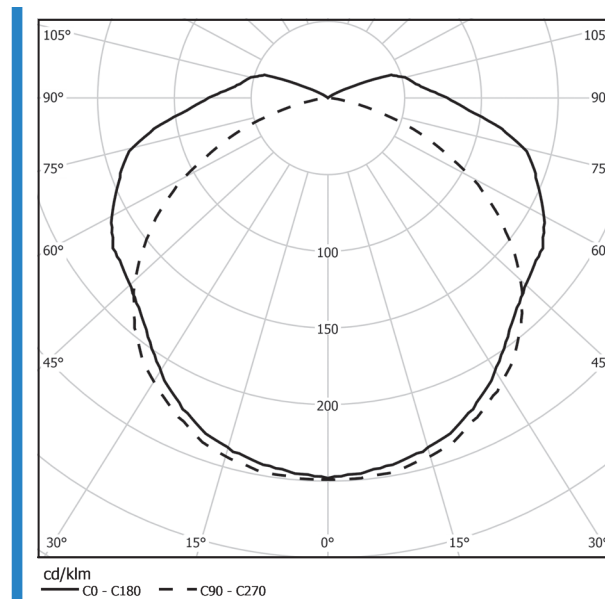
Warranty period - **5 years**

## TECHNICAL DATA

<b>Type of protection</b>	Certificate	EAC
	Protection degree	IP65
	Ambient temperature	0°C÷+50°C
<b>Electrical data</b>	Supply voltage, VAC	140÷265
	Frequency, Hz	50±10%
	Color temperature, K	4500÷5500
	Durability, hours	100000
	Operating hours in emergency service, hours	1
	Warranty, years	5
<b>Construction</b>	Housing	Anodized aluminum profile with plastic and covers
	Diffuser	Polycarbonate glass
	Gasket	Silicone
	Battery unit type	Wall, ceiling
	Overall dimensions, mm	See <i>Model code</i> table
	Weight, kg	See <i>Model code</i> table
	Mounting	Wall, ceiling

Model catalogue number	Luminous flux, lm	Power consumption, W	Overall dimensions (AxBxC), mm	Weight, kg
<b>Spektr-50A-BA</b> (SSO-A-220-050-N-MCC1)	4500/500	50	635x180x107	5,0

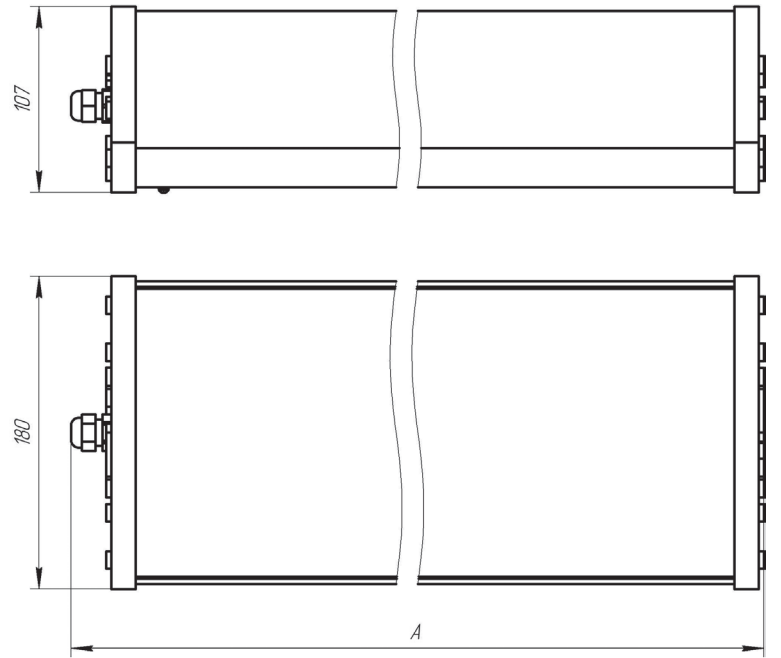
## LIGHT DISTRIBUTION CURVE



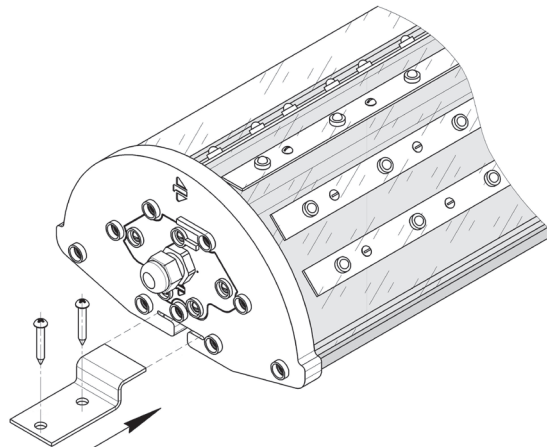
**A - cosine**

# EMERGENCY ILLUMINATION

## DIMENSION DRAWINGS



## MOUNTING





Liniya-14-BA

# EMERGENCY ILLUMINATION

## DESCRIPTION

Indoor illumination of  
**halls, public spaces, offices, trading floors for work in both standard operating and emergency modes**

**LED technology** with a high luminous efficiency with rated lumen-maintenance life  
**L70F10 (50000 hours) and L50F50 (100000 hours)**

**Aesthetically designed** housing

Warranty period - **5 years**

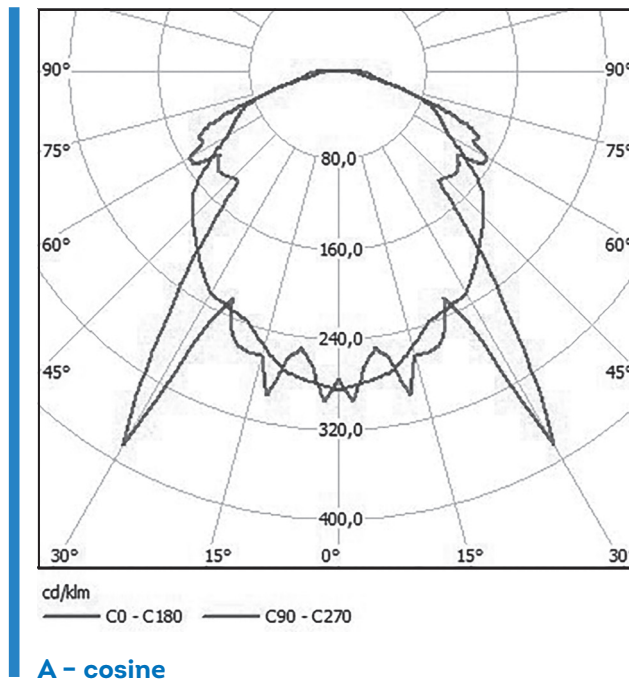
## TECHNICAL DATA

Type of protection	Certificate	EAC
	Protection degree	IP65
	Ambient temperature	0°C÷+ 50°C
Electrical data	Supply voltage, VAC	140÷265
	Frequency, Hz	50±10%
	Color temperature, K	4500÷5500
	Durability, hours	100000
	Operating hours in emergency service, hours	1
	Warranty, years	5
Construction	Housing	Plastic with steel base
	Diffuser	Polycarbonate glass
	Gasket	Silicone
	Battery unit type	Wall, ceiling
	Overall dimensions, mm	See <i>Model code</i> table
	Weight, kg	See <i>Model code</i> table
	Mounting	Wall, ceiling



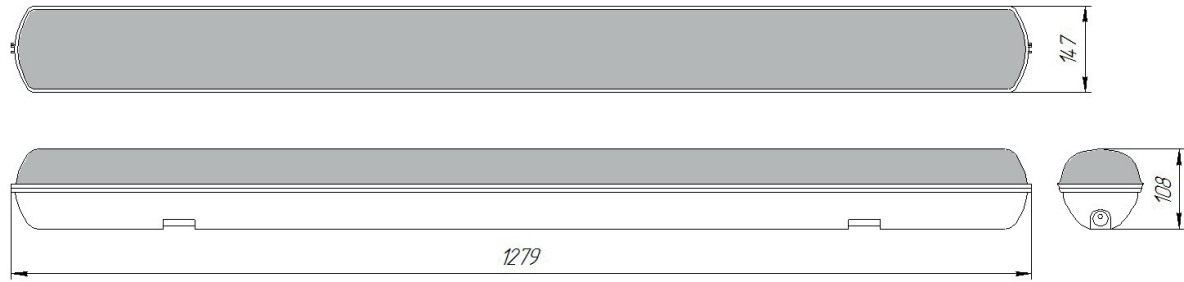
Model catalogue number	Luminous flux, lm	Power consumption, W	Overall dimensions (AxBxC), mm	Weight, kg
<b>Liniya-14-BA</b> (SSP-A-220-058-N-MCC1)	3000/450	42	1279x147x108	2,7

## LIGHT DISTRIBUTION CURVE



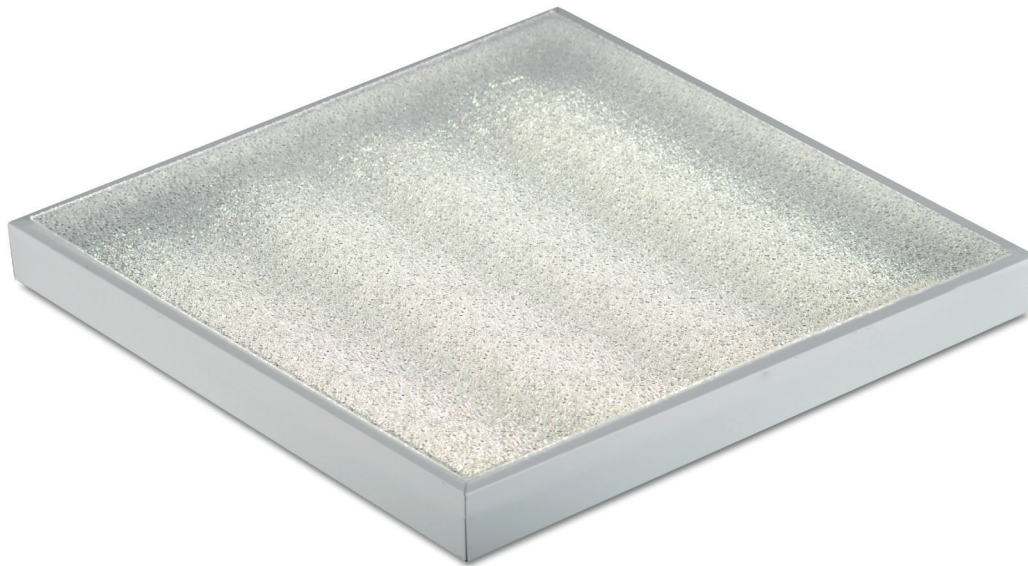
# EMERGENCY ILLUMINATION

## DIMENSION DRAWINGS



## MOUNTING





**Armstrong-18-P1-BA**

# EMERGENCY ILLUMINATION

## DESCRIPTION

Indoor illumination of  
**halls, public spaces, offices, trading floors for work in both standard operating  
 and emergency modes**

**LED technology** with a high luminous efficiency with rated lumen-maintenance life  
**L70F10 (50000 hours) and L50F50 (100000 hours)**

**Aesthetically designed** housing

Warranty period - **5 years**

## TECHNICAL DATA

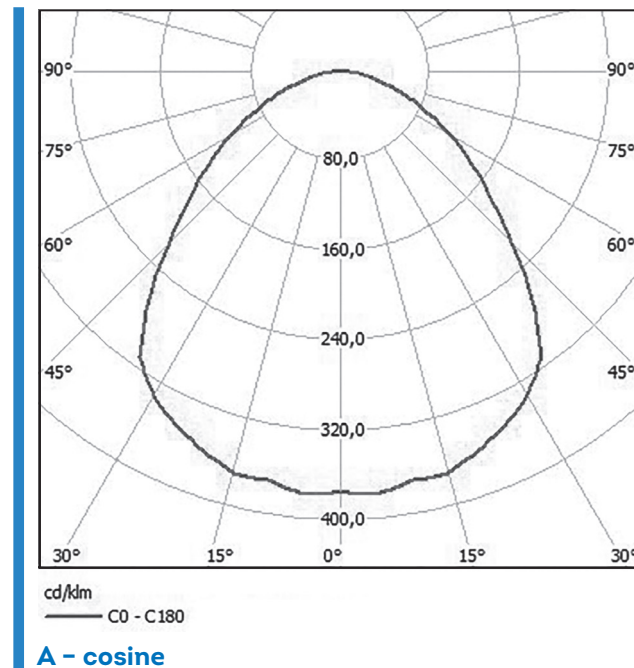
<b>Type of protection</b>	Certificate	EAC
	Protection degree	IP20
	Ambient temperature	0°C÷+ 50°C
<b>Electrical data</b>	Supply voltage, VAC	140÷265
	Supply voltage, VDC	200÷370
	Frequency, Hz	50±10%
	Color temperature, K	4500÷5500
	Durability, hours	100000
	Operating hours in emergency service, hours	1
	Warranty, years	5
<b>Construction</b>	Housing	Plastic with steel base covered with paint
	Diffuser	Prismatic glass
	Gasket	Silicone
	Battery unit type	Built-in
	Overall dimensions, mm	See <i>Model code</i> table
	Weight, kg	See <i>Model code</i> table
	Mounting	Ceiling; built-in

# SERIES ARMSTRONG-BA

MODEL CODE

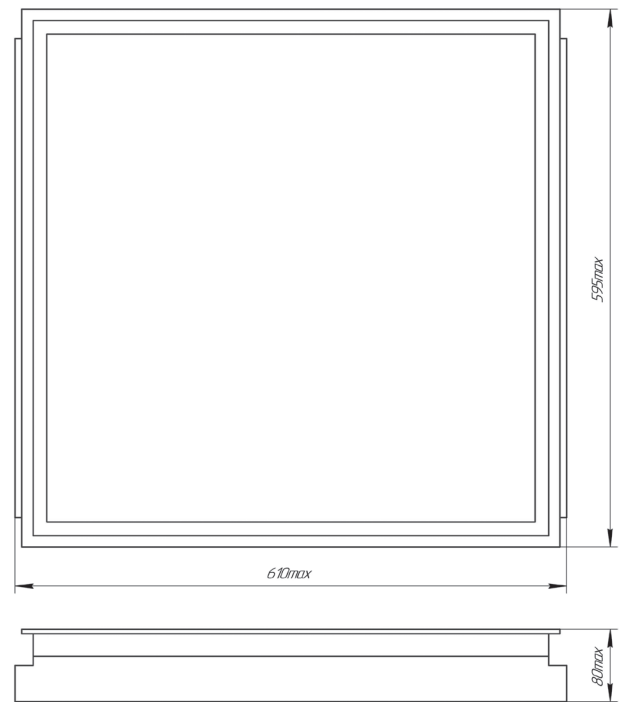
Model catalogue number	Luminous flux, lm	Power consumption, W	Overall dimensions (AxBxC), mm	Weight, kg
<b>Armstrong-18-PI-BA</b> (SSP-A-220-057-N-MCC1)	3000/450	42	595x595x80	4,0

## LIGHT DISTRIBUTION CURVE

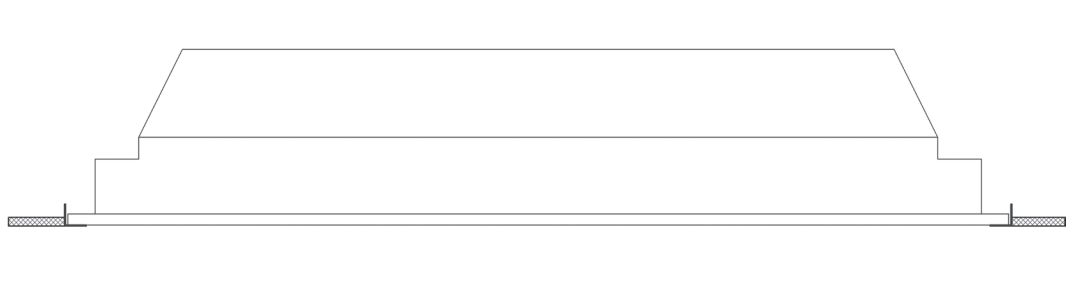


# EMERGENCY ILLUMINATION

## DIMENSION DRAWINGS



## MOUNTING









**JSC Proton**

**19 Leskova str., Orel 302040 Russia**

**Tel.: +7 4862 498534**

**Fax: +7 4862 414403**

**[sales@proton-orel.ru](mailto:sales@proton-orel.ru)**

**[www.proton-orel.ru](http://www.proton-orel.ru)**